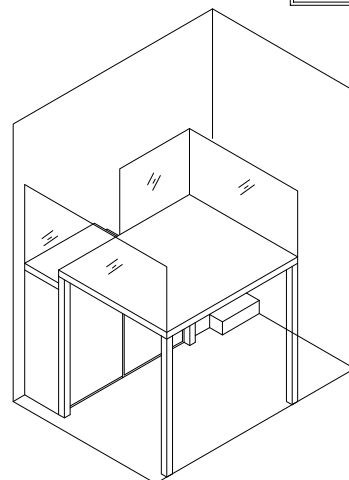
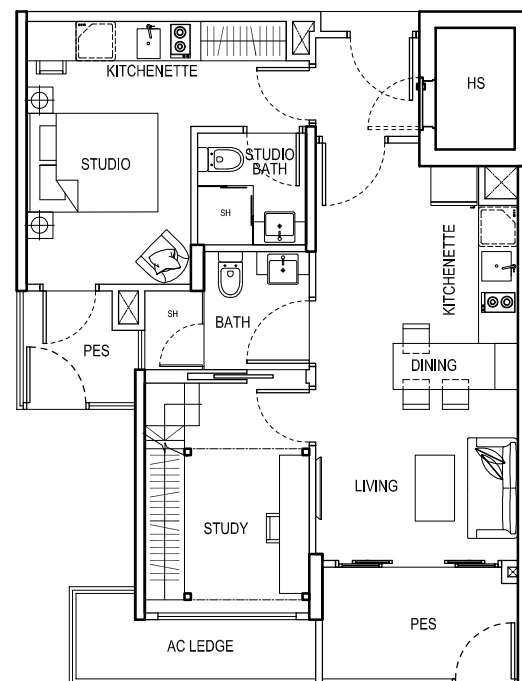
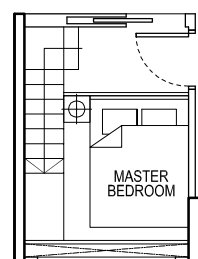


TYPE 2DK1 - P

2 Bedroom Dual Key + PES
71 sqm / 764 sqft
#01-04



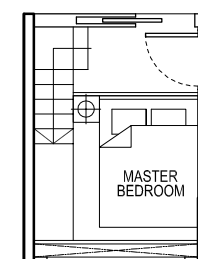
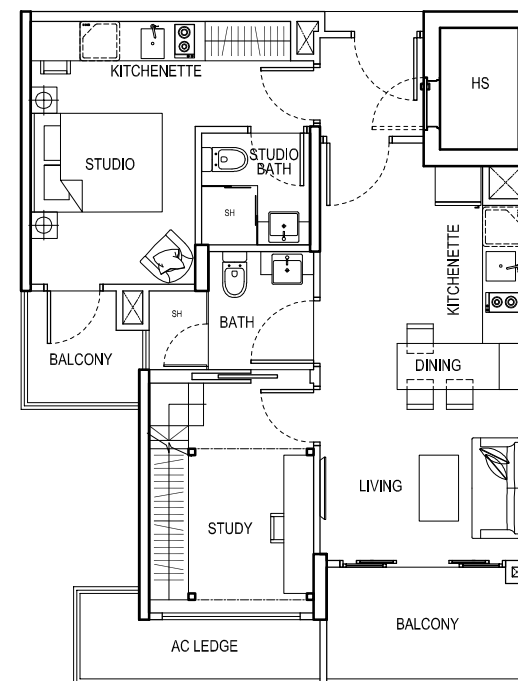
AXONOMETRI



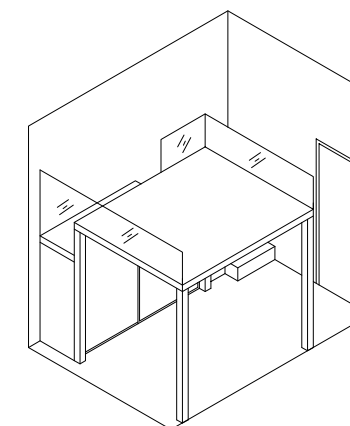
UPPER PLATFORM

TYPE 2DK1

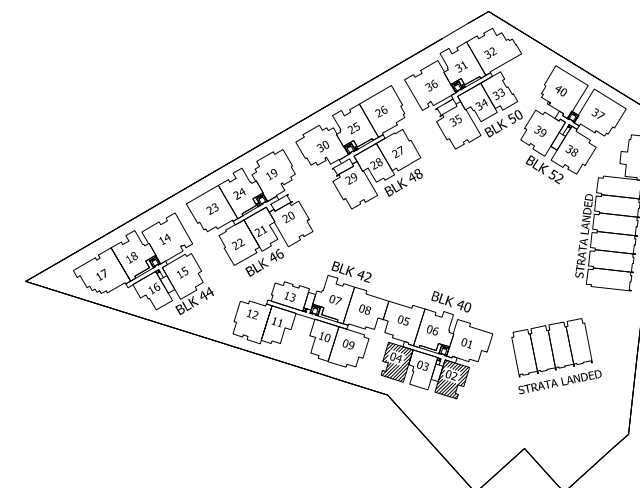
2 Bedroom Dual Key
71 sqm / 764 sqft
#02-02 #02-04
#03-02 #03-04
#04-02 #04-04
#05-02 #05-04



UPPER PLATFORM



AXONOMETRI



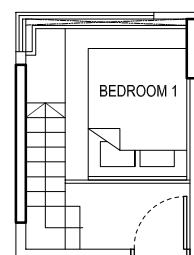
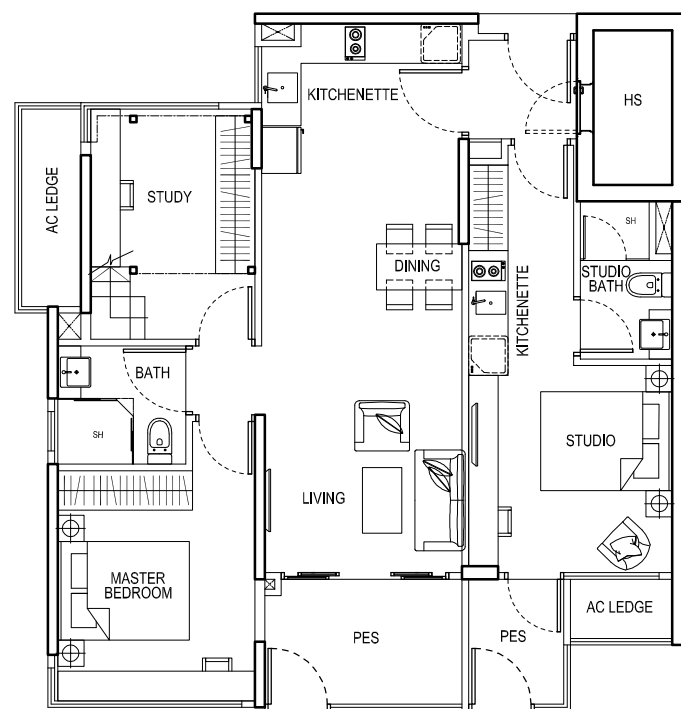
TYPE 3DK - P

3 Bedroom Dual Key + PES

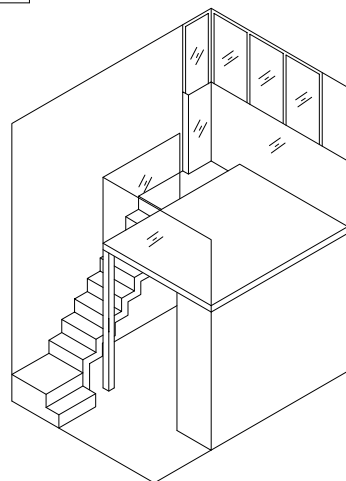
95 sqm / 1023 sqft

#01-22

#01-27



UPPER PLATFORM



AXONOMETRI

TYPE 3DK

3 Bedroom Dual Key

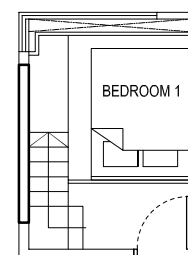
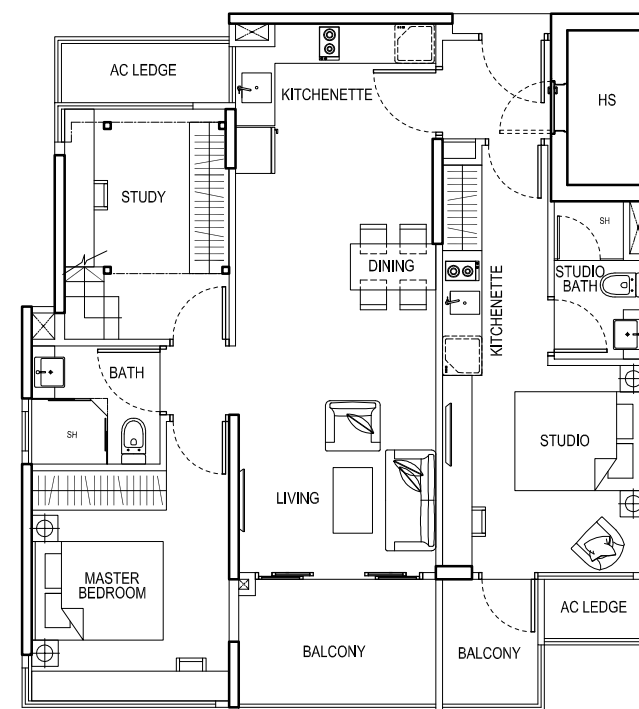
95 sqm / 1023 sqft

#02-22 #02-27

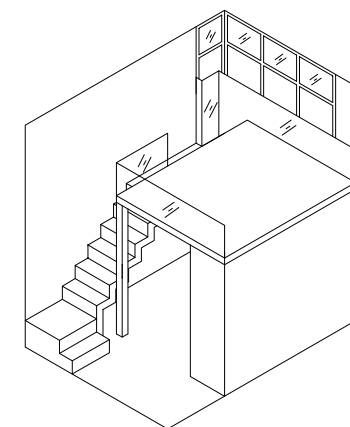
#03-22 #03-27

#04-22 #04-27

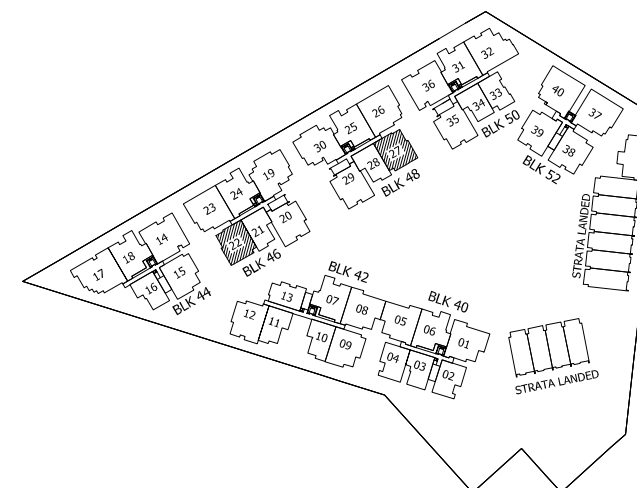
#05-22 #05-27



UPPER PLATFORM



AXONOMETRI



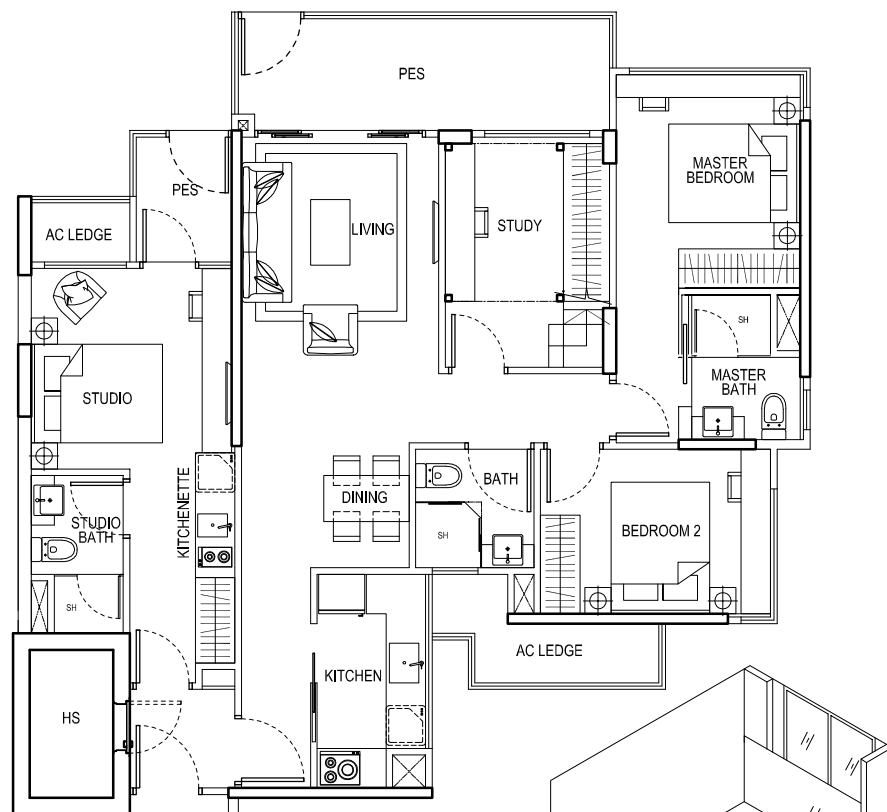
TYPE 4DK - P

4 Bedroom Dual Key + PES

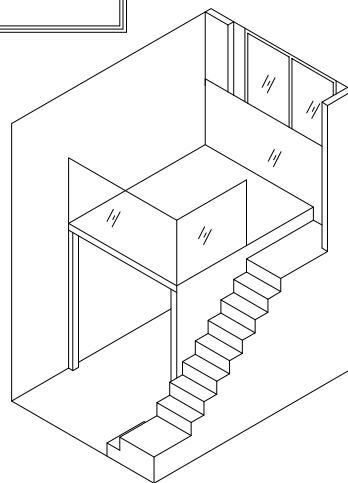
117 sqm / 1259 sqft

#01-19

#01-30



UPPER PLATFORM



AXONOMETRI

TYPE 4DK

4 Bedroom Dual Key

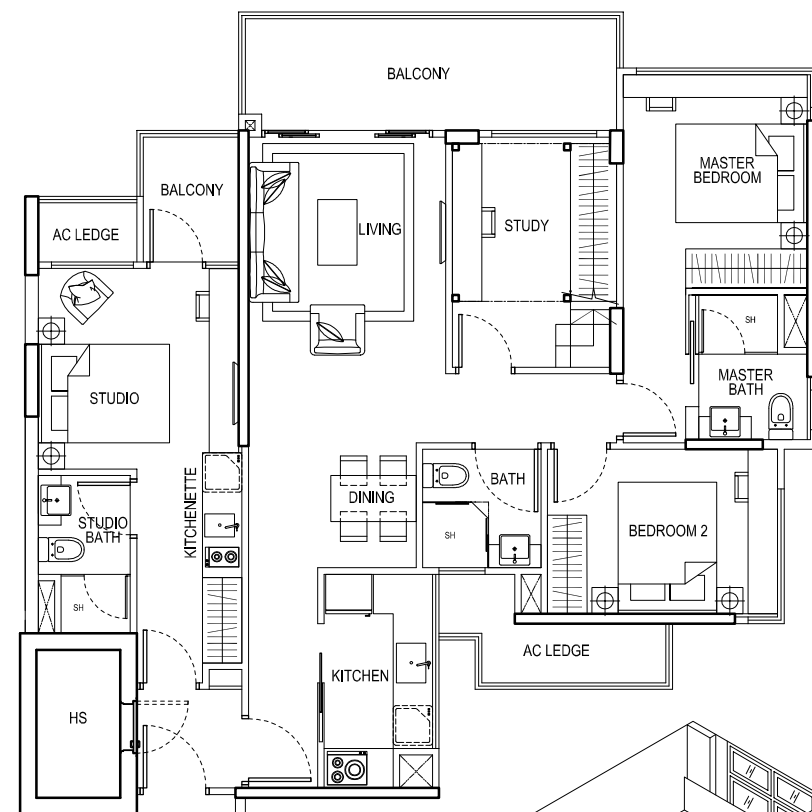
117 sqm / 1259 sqft

#02-19 #02-30

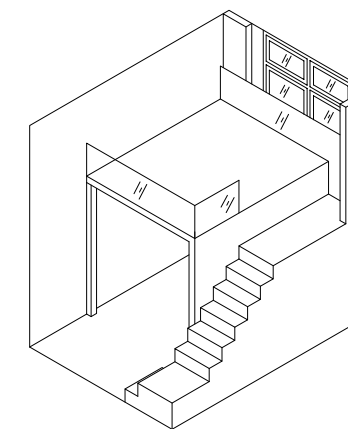
#03-19 #03-30

#04-19 #04-30

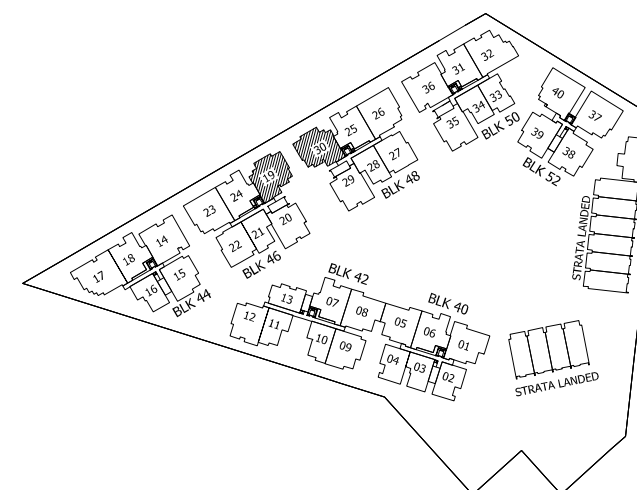
#05-19 #05-30



UPPER PLATFORM

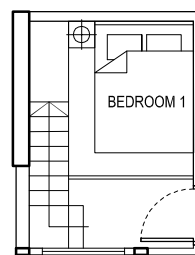
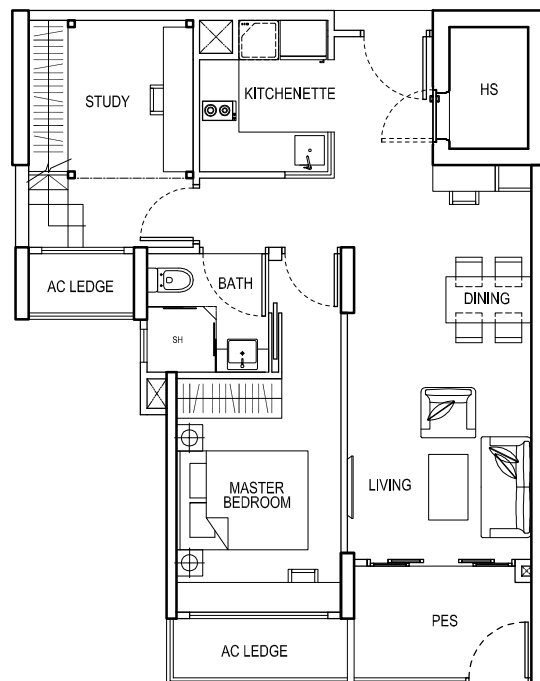


AXONOMETRI

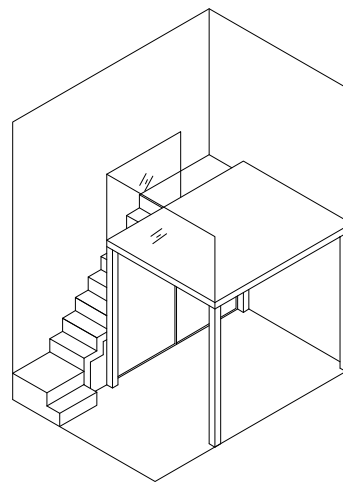


TYPE A1 - P

2 Bedroom + PES
67 sqm / 721 sqft
#01-03
#01-16



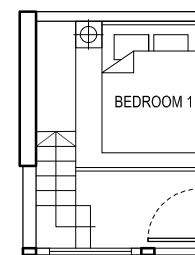
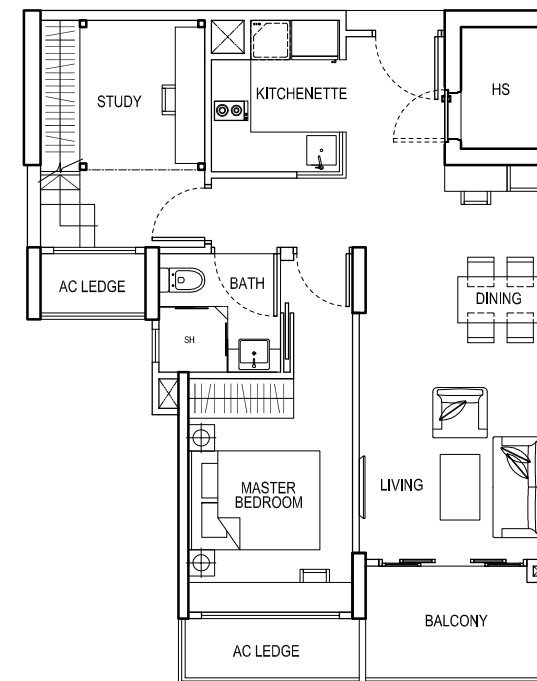
UPPER PLATFORM



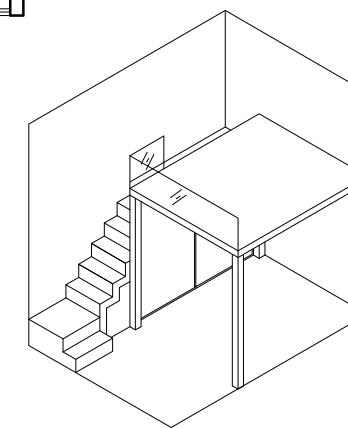
AXONOMETRI

TYPE A1

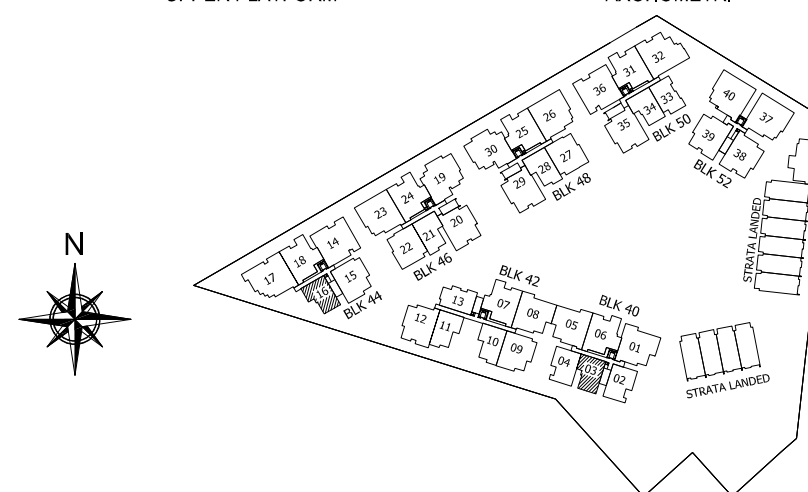
2 Bedroom
67 sqm / 721 sqft
#02-03 #02-16
#03-03 #03-16
#04-03 #04-16
#05-03 #05-16



UPPER PLATFORM

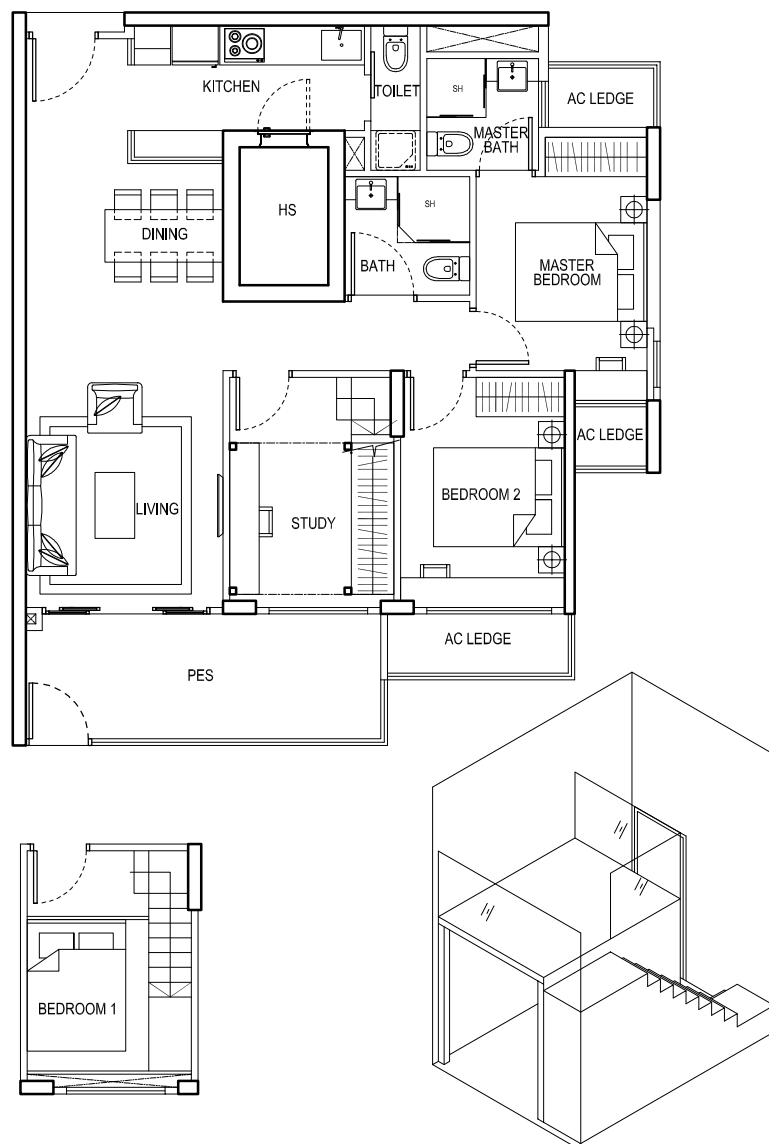


AXONOMETRI



TYPE B1 - P

3 Bedroom + PES
96 sqm / 1033 sqft
#01-09
#01-15

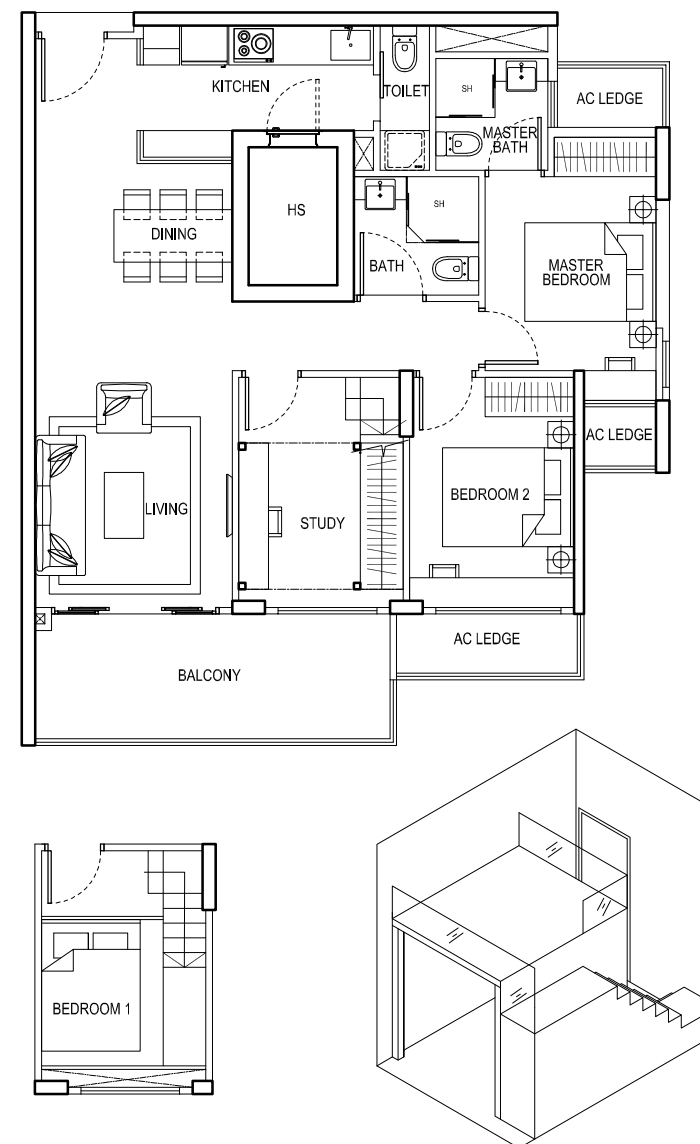


UPPER PLATFORM

AXONOMETRI

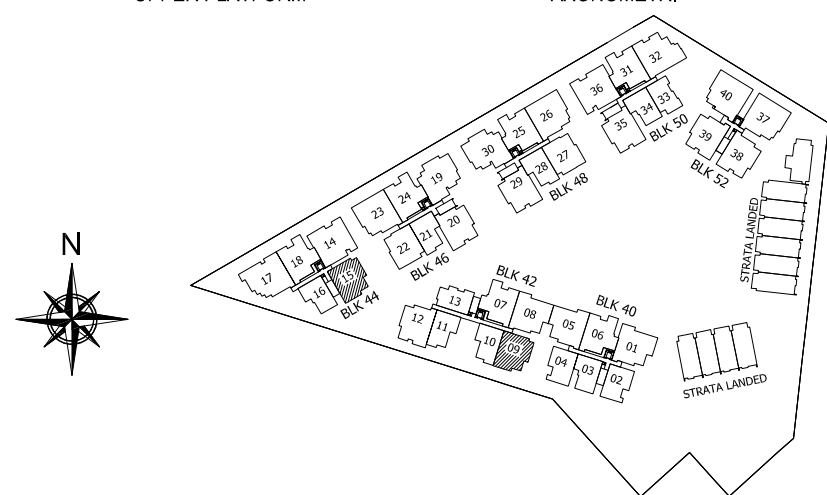
TYPE B1

3 Bedroom
96 sqm / 1033 sqft
#02-09 #02-15
#03-09 #03-15
#04-09 #04-15
#05-09 #05-15



UPPER PLATFORM

AXONOMETRI



The above plans and illustrations are subject to changes as may be approved by relevant authorities. Plans and illustrations are not drawn to scale. The balcony shall not be enclosed. Only approved balcony screen shall be used. For an illustration of approved balcony screen, please refer to specification page of this brochure

TYPE B2 - P

3 Bedroom Deluxe + PES

99 sqm / 1066 sqft

#01-06

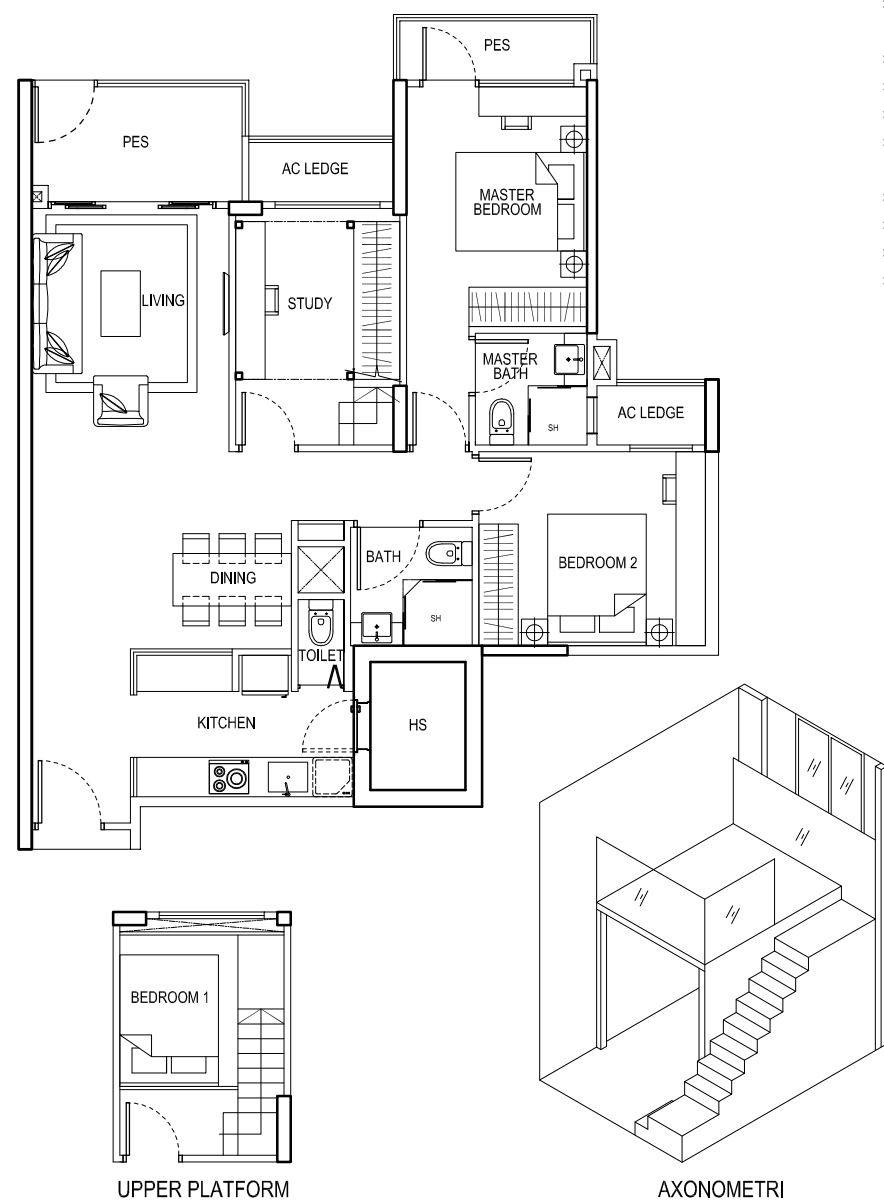
#01-07

#01-18

#01-24

#01-25

#01-31



UPPER PLATFORM

AXONOMETRI

TYPE B2

3 Bedroom Deluxe

99 sqm / 1066 sqft

#02-06 #02-07

#03-06 #03-07

#04-06 #04-07

#05-06 #05-07

#02-18 #02-24

#03-18 #03-24

#04-18 #04-24

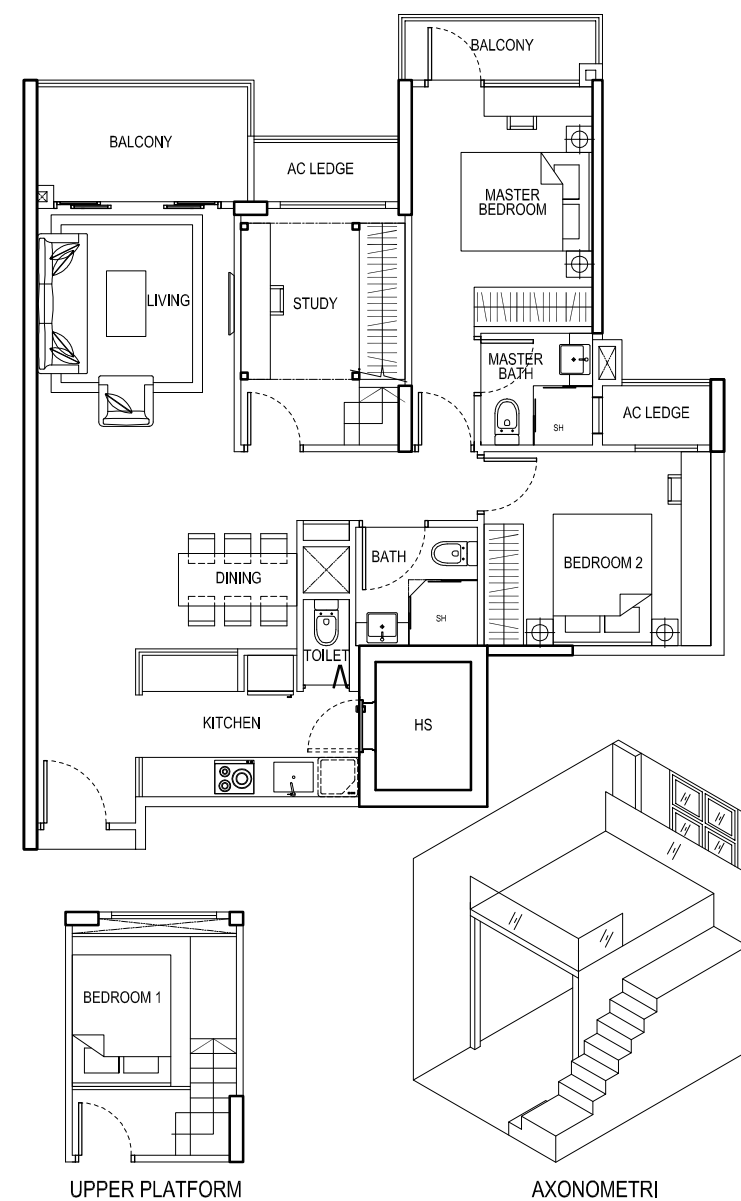
#05-18 #05-24

#02-25 #02-31

#03-25 #03-31

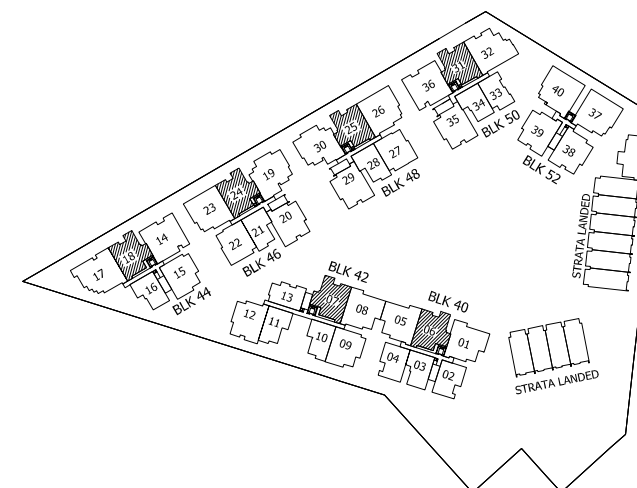
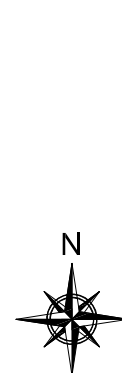
#04-25 #04-31

#05-25 #05-31



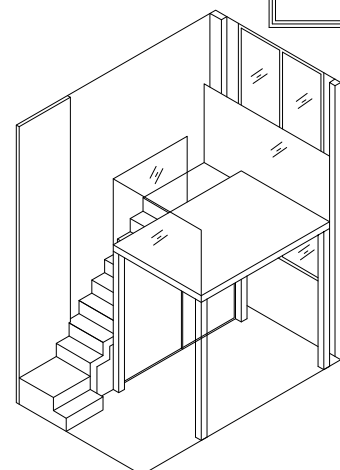
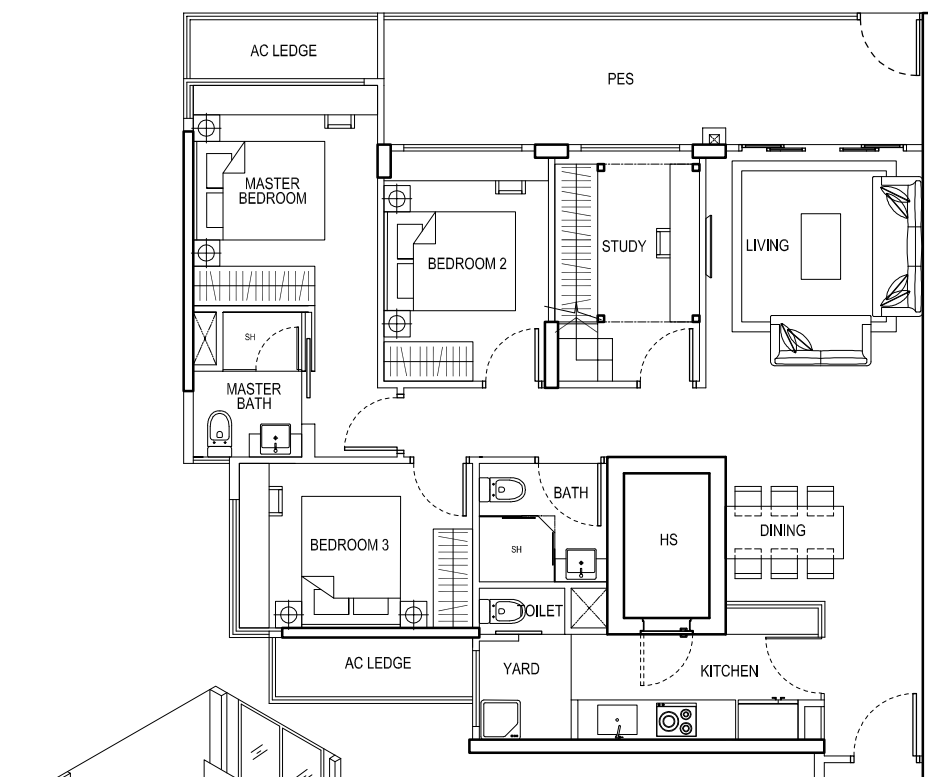
UPPER PLATFORM

AXONOMETRI

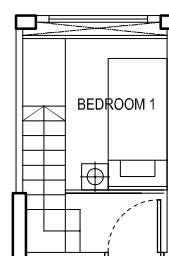


TYPE C2 - P

4 Bedroom + PES
119 sqm / 1281 sqft
#01-23
#01-26



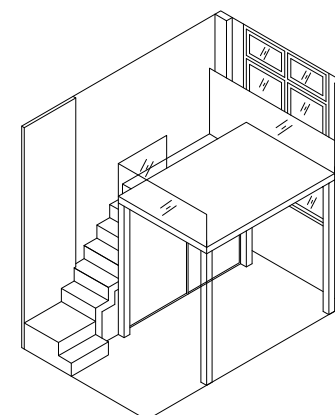
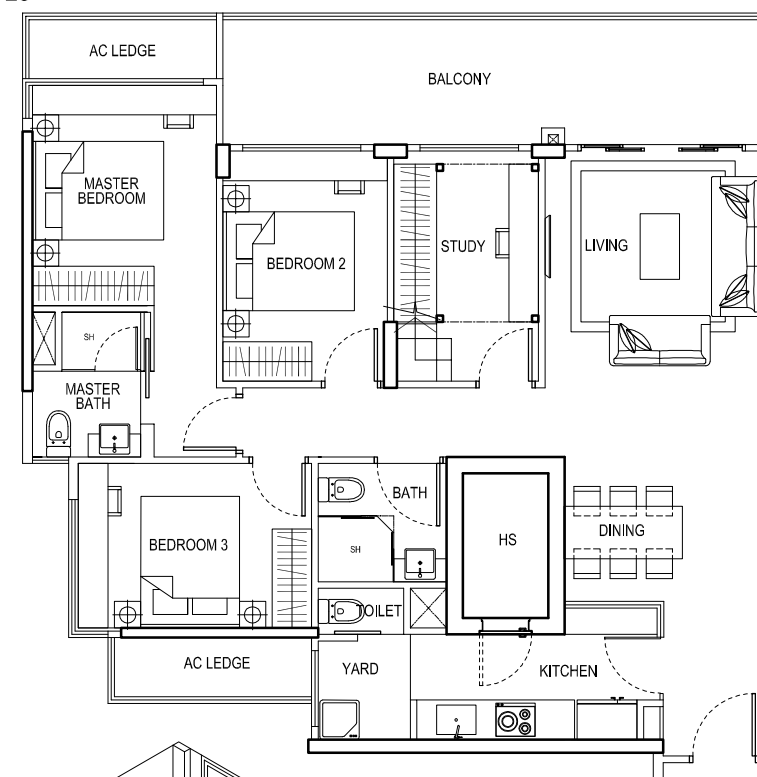
AXONOMETRI



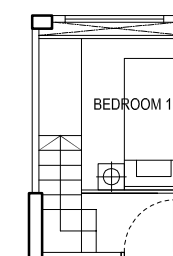
UPPER PLATFORM

TYPE C2

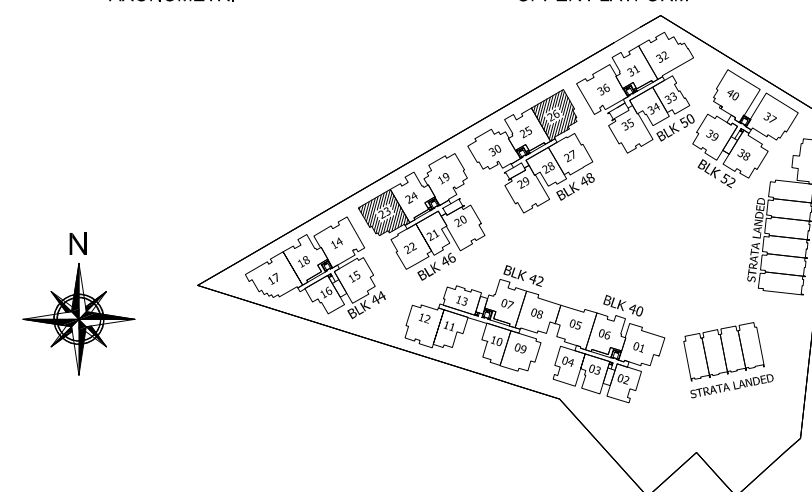
4 Bedroom
119 sqm / 1281 sqft
#02-23 #02-26
#03-23 #03-26
#04-23 #04-26
#05-23 #05-26



AXONOMETRI

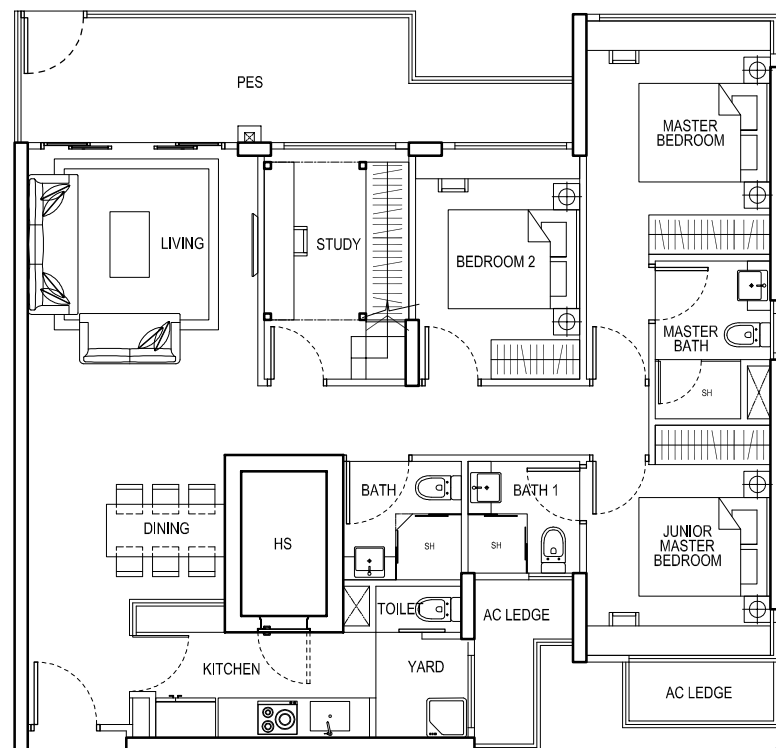


UPPER PLATFORM

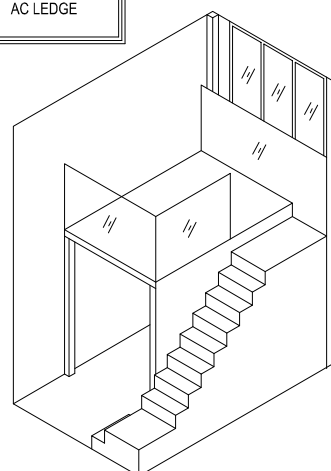


TYPE C4 - P

4 Bedroom Deluxe + PES
 122 sqm / 1313 sqft
 #01-14
 #01-36



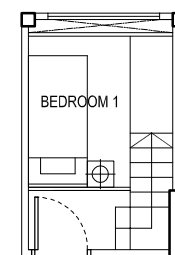
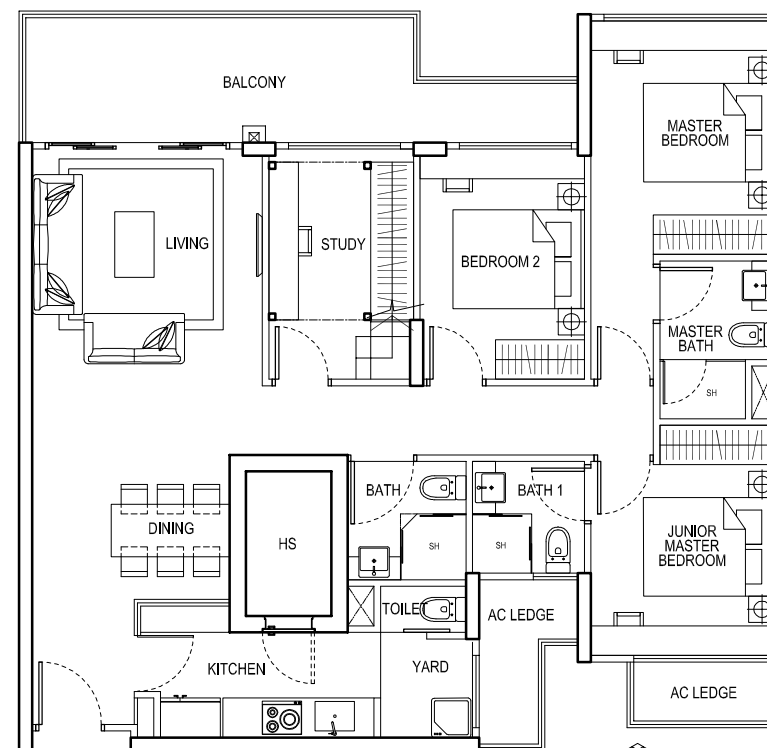
UPPER PLATFORM



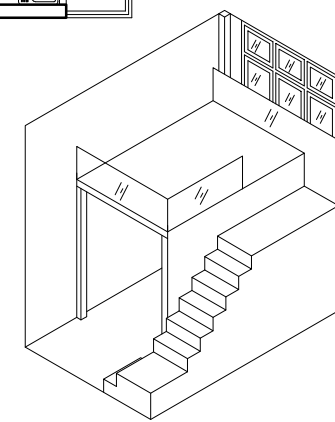
AXONOMETRI

TYPE C4

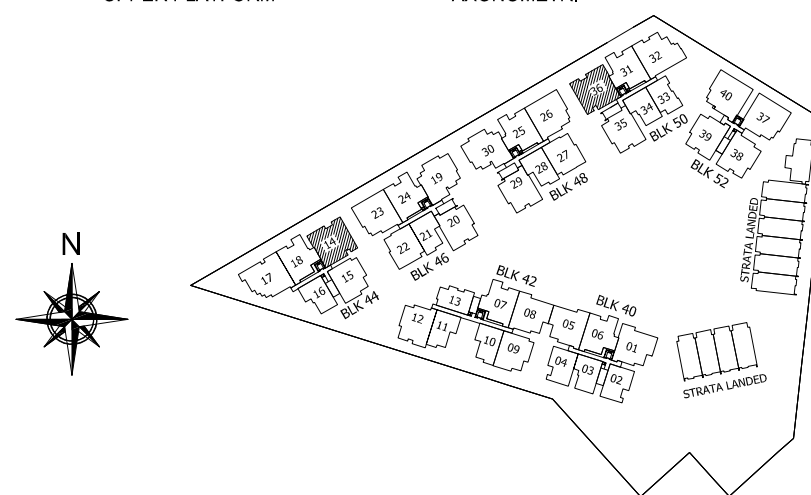
4 Bedroom Deluxe
 122 sqm / 1313 sqft
 #02-14 #02-36
 #03-14 #03-36
 #04-14 #04-36
 #05-14 #05-36



UPPER PLATFORM



AXONOMETRI



STRATA HOUSE 2

5 Bedroom Strata House

260 sqm / 2799 sqft

BLK 20

BLK 22

BLK 24

BLK 26

BLK 28

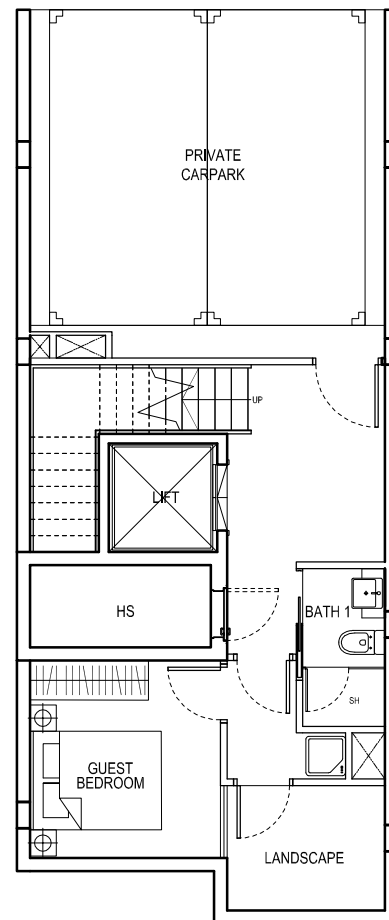
BLK 30

BLK 32

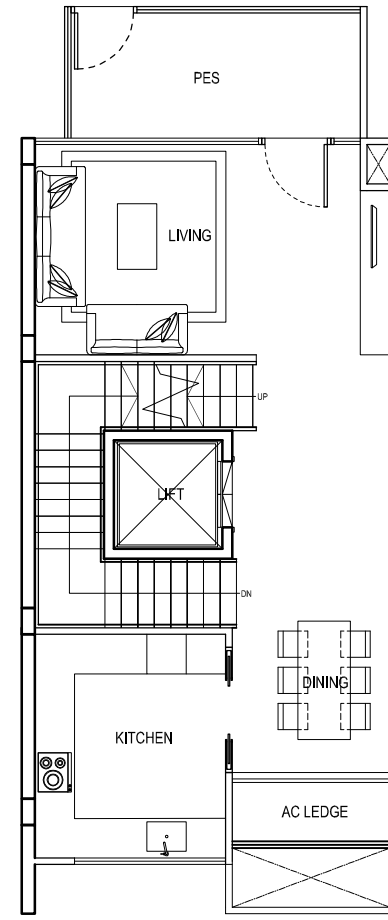
BLK 34

BLK 36

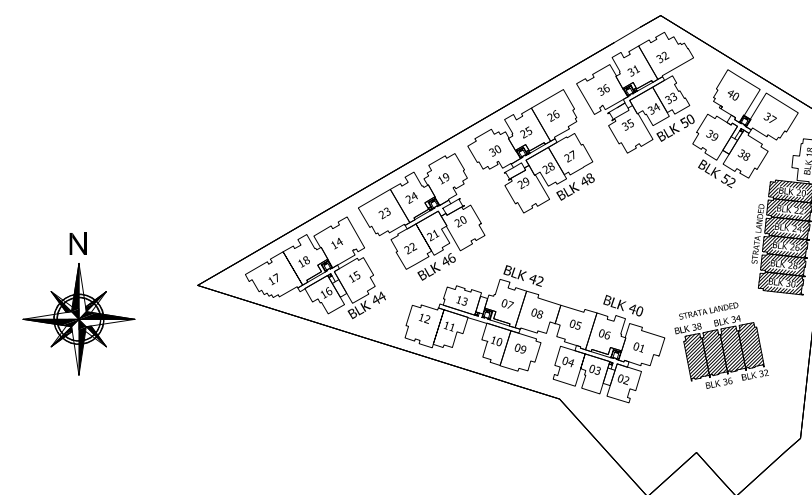
BLK 38



BASEMENT LEVEL



FIRST STOREY LEVEL



The above plans and illustrations are subject to changes as may be approved by relevant authorities. Plans and illustrations are not drawn to scale. The balcony shall not be enclosed. Only approved balcony screen shall be used. For an illustration of approved balcony screen, please refer to specification page of this brochure

