



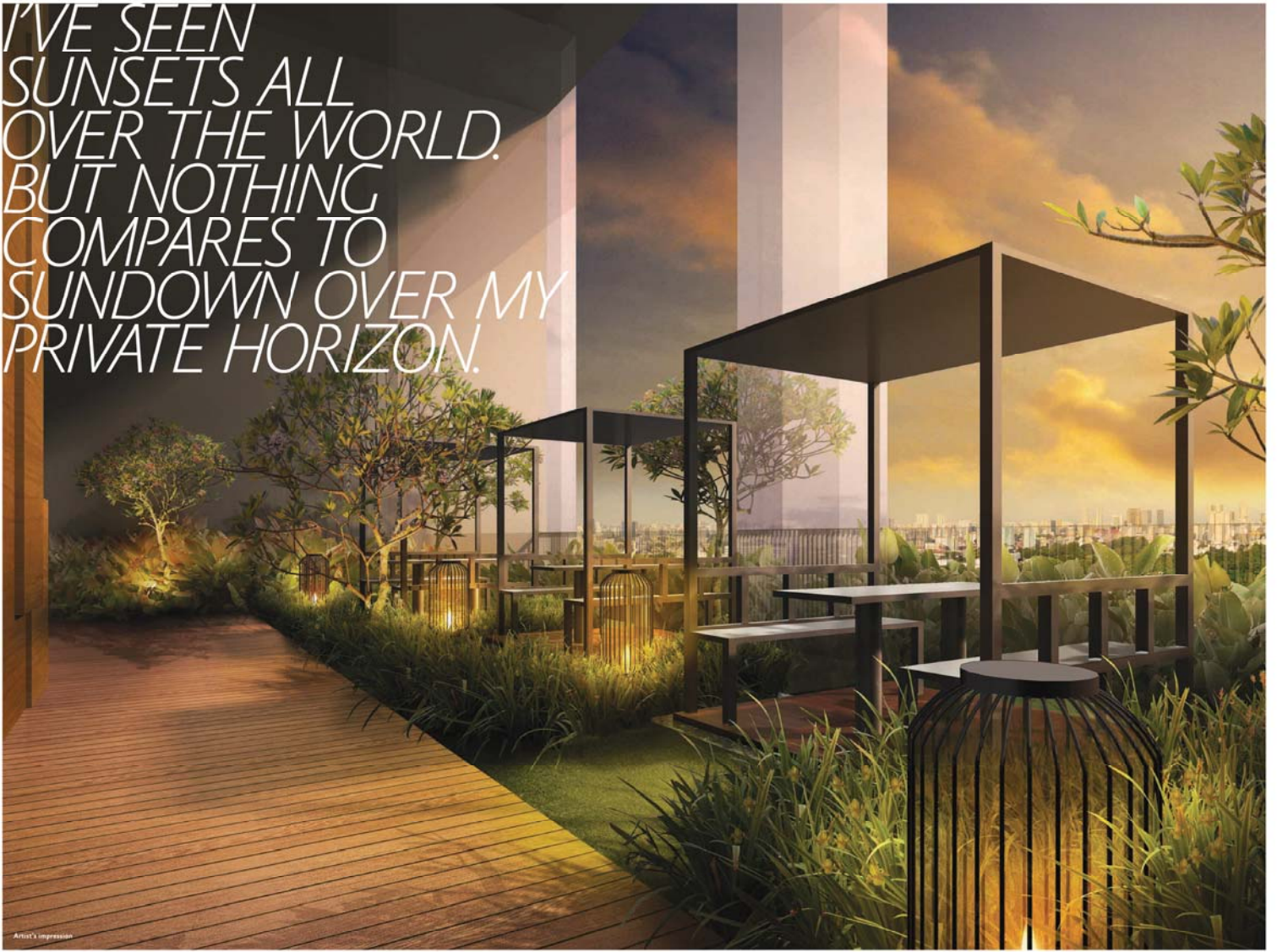
Alex
Residences

Alex
Residences



AN INSPIRED LIFE

I'VE SEEN
SUNSETS ALL
OVER THE WORLD.
BUT NOTHING
COMPARES TO
SUNDOWN OVER MY
PRIVATE HORIZON.





TAJ MAHAL.
EMPIRE STATE
BUILDING. SYDNEY
OPERA HOUSE. YET
NOTHING INSPIRES
QUITE LIKE HOME.

In the heart of Alexandra rises a 40-storey premier development surrounded by charm, tranquility and extraordinary enjoyment.

Introducing Alex Residences – a home where you can feast on the flavours of life and find deep inspiration wherever you go. From quaint cafés at Tiong Bahru to the antique shops and trendy cocktail bars at Tanglin, unique experiences are waiting to be discovered. All you have to do is step out.

I SOUGHT THE
WORLD FOR
UNFORGETTABLE
EXPERIENCES.
NOW ALL OF LIFE'S
PLEASURES
SURROUND ME.



Artist's impression



Artist's impression



The Rock Bar in Bali, The Press Lounge in New York, Seven Hills rooftop bar in Istanbul. You don't have to travel thousands of miles to enjoy panoramic cityscape views while sipping on a few cocktails. In fact, just 40 storeys above awaits all the privacy and relaxation you need to wind down your day.



A rooftop bar in Bangkok

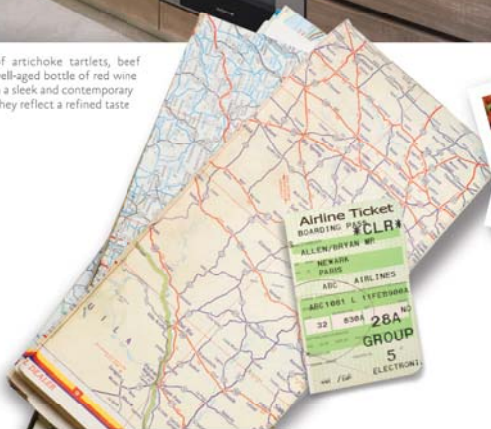


Cocktails at a rooftop bar in the middle of New York

SUNNY TUSCAN. ROBUST KASHMIRI. MODERN AUSTRALIAN. THE FLAVOURS OF THE WORLD GATHER IN MY STATE-OF-THE-ART KITCHEN.



A lovely home-cooked dinner party of artichoke tartlets, beef burgundy, brioche bread pudding and a well-aged bottle of red wine belies only the most thoughtful finishes in a sleek and contemporary setting. Sourced from all over the world, they reflect a refined taste and your preferred lifestyle.





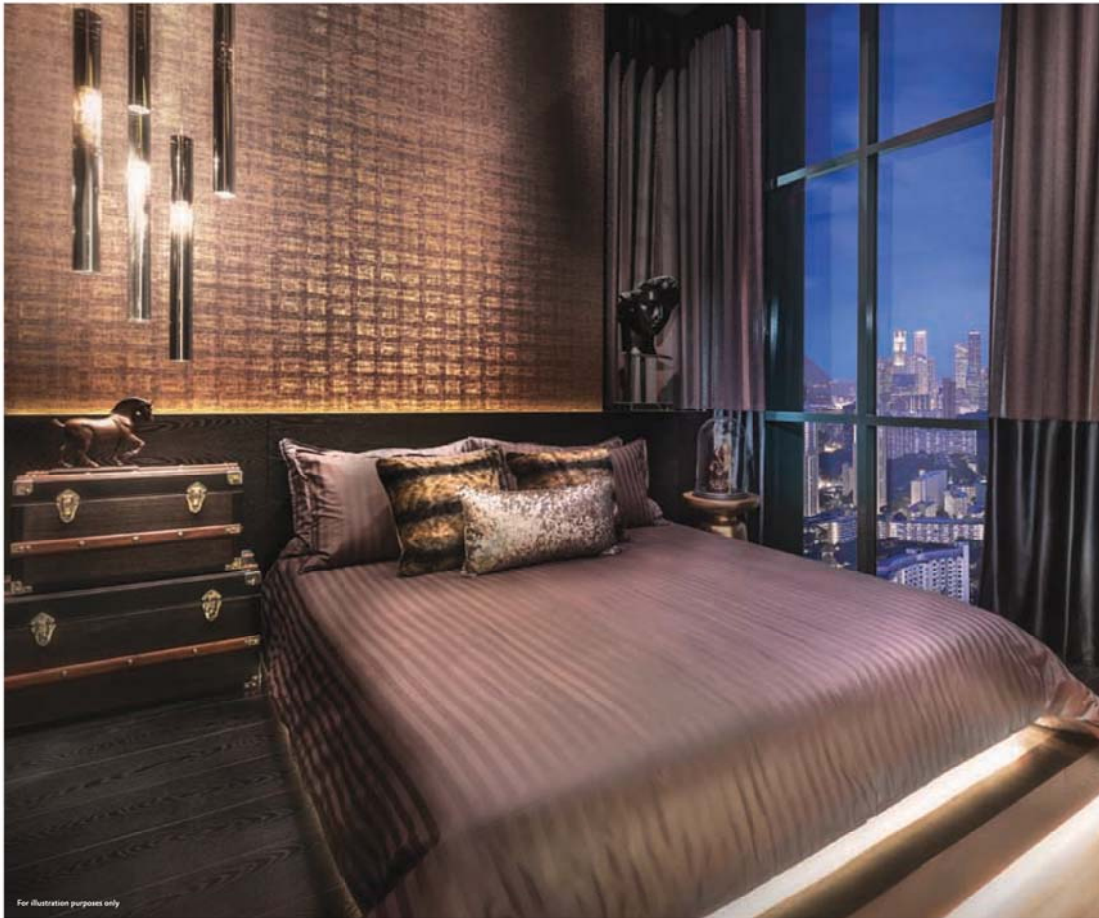
For illustration purposes only

*A DOUBLE ESPRESSO. A GOOD BOOK.
A PLACE TO PUT UP MY FEET. I'M ALL
PACKED FOR ARMCHAIR TRAVEL.*

Lounge in your sofa and collect your thoughts as you wind down your day. Listen to a New York jazz band and leaf through the travel journal which you have written from cover to cover as you make yourself a pot of Moroccan mint tea. The grandest plans and most unique memories mingle right here.

THERE'S NO PLACE IN THE WORLD I'D RATHER LAY MY HEAD.

It could be the Maldives, Shanghai or even a month-long travel around Eastern Europe. Once the doors are unlocked, a dark-panelled cocoon set against glistering city lights and enveloped in homely warmth welcomes you to a vast space you can adorn and call your own.



For illustration purposes only

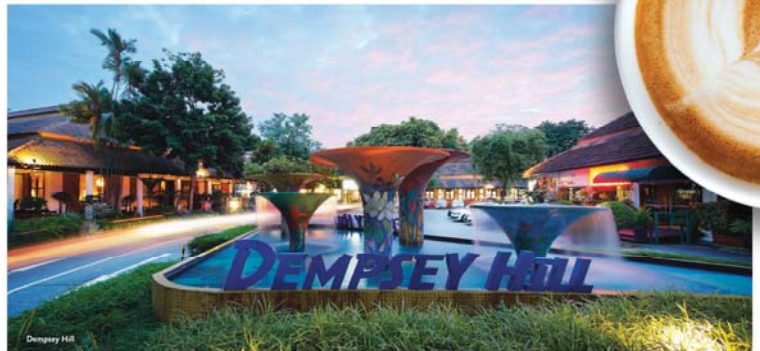


A boutique design hotel in Notting Hill

Watching the sun set over the Manhattan skyline



For illustration purposes only



NEW YORK HAS SOHO. TOKYO HAS UENO. AND I HAVE THE BEST OF SINGAPORE RIGHT AT MY DOORSTEP.

Here's where your mornings begin with new experiences. It could be the aroma of freshly brewed coffee at a café in Dempsey or taking in the crisp air as you stroll among tall, dense trees in the Southern Ridges. There's a wonderful potpourri of tastes, sights and sounds just minutes away from discovery.

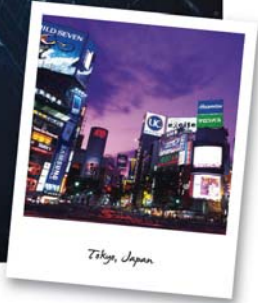




Step up the pace and fill your nights with thrilling possibilities. Check in to a hole-in-the-wall cocktail bar at Club Street. Laugh your way through a stand-up comedy. Move to the sounds of an orchestral concert at Esplanade. You'll never miss a beat to life's pleasures again.



Fort Canning Park



Tokyo, Japan



SINGAPORE BOTANIC GARDENS

Home to the world's largest orchid display featuring over 60,000 plants and orchids, it's the perfect place to spend an afternoon walking about with your family.



DEMPESEY HILL

From Samy's Curry to The White Rabbit, you will find just the place to throw a dinner party a short distance from home.



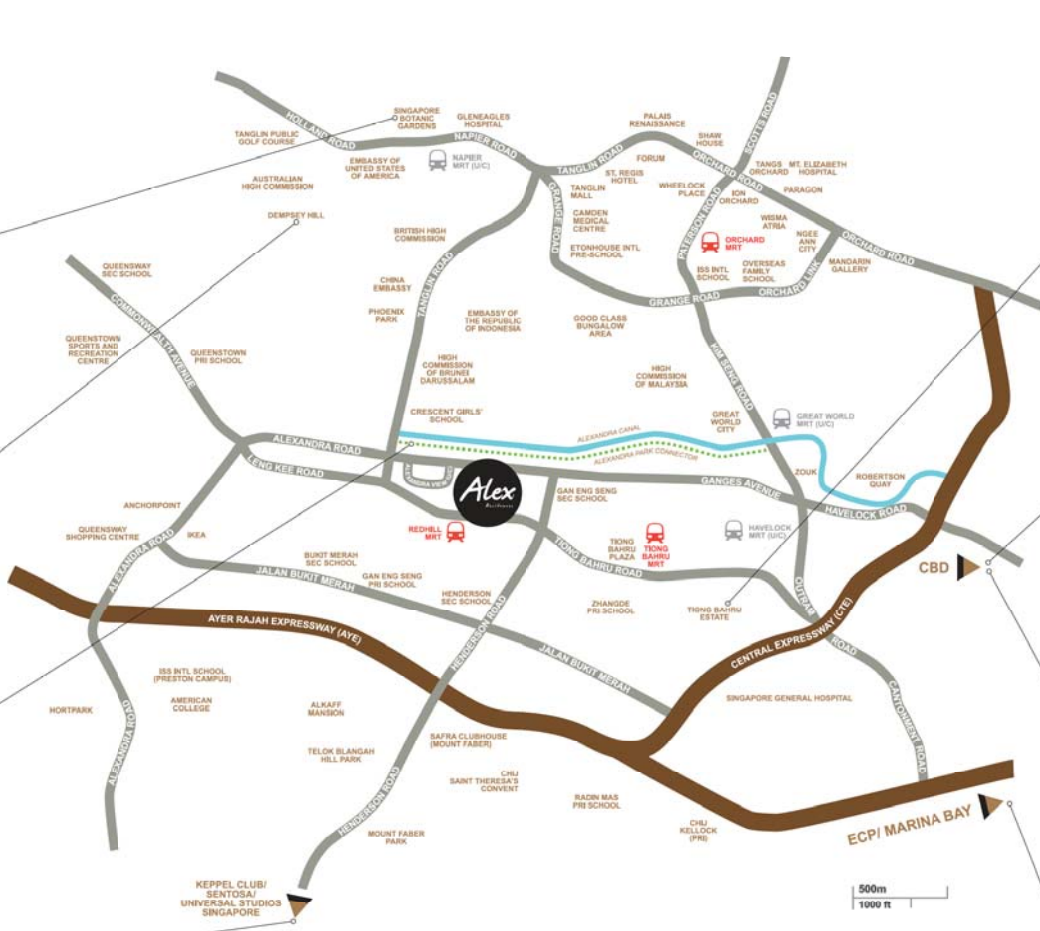
PARK CONNECTOR

Stretching from Tanglin Road to Zion Road, the Alexandra Park Connector gives you a glimpse of modern high-rise buildings and easy access to delectable hawker fare at Zion Riverside Food Centre.



SENTOSA

Attracting over 5 million visitors a year, it's not hard to see why Sentosa is such a popular destination among locals and tourists. From Universal Studios to world-class golf links, the best entertainment is right before you.



TIONG BAHRU ESTATE

Built in the 1930s, Tiong Bahru is one of Singapore's oldest housing estates. Be taken in by the charm of this quaint neighbourhood as you explore its traditional eateries and modern cafes.



ESPLANADE - THEATRES ON THE BAY

Enjoy a wide array of international and local plays, concerts and musicals at the iconic centre for performing arts located along the waterfront promenade.



RAFFLES PLACE

Featuring some of the tallest buildings and landmarks in the country, get to the heart of business with ease via Ganges Avenue and Havelock Road.



GARDENS BY THE BAY

Enjoy an amazing view of the Marina Bay financial district skyline and a picnic with your loved ones at this world-renowned horticultural attraction.

MINUTES TO ORCHARD RD, RAFFLES PLACE AND SENTOSA. I'M AT THE CENTRE OF MY WORLD HERE.



DISCOVERY@L1



- | | | | |
|---|------------------------|----|-----------------|
| 1 | Porch | 8 | Restroom |
| 2 | Gym on 2 nd | 9 | Pool Bar |
| 3 | Piazza | 10 | Playpark |
| 4 | Forest Trail | 11 | Sculpture Court |
| 5 | Guard House | 12 | Pool Deck |
| 6 | Family Deck | 13 | Family Pool |
| 7 | BBQ Pavilion | 14 | Lily Pond |

PASSAGE@L4



- 1 Meeting Square
- 2 Meeting Bar
- 3 Reading Patio



JOURNEY@L14



- 1 Chillout Pod
- 2 Zen Garden
- 3 Brew House
- 4 Nature Deck
- 5 Chess Garden
- 6 Putting Green
- 7 Lounge Bar



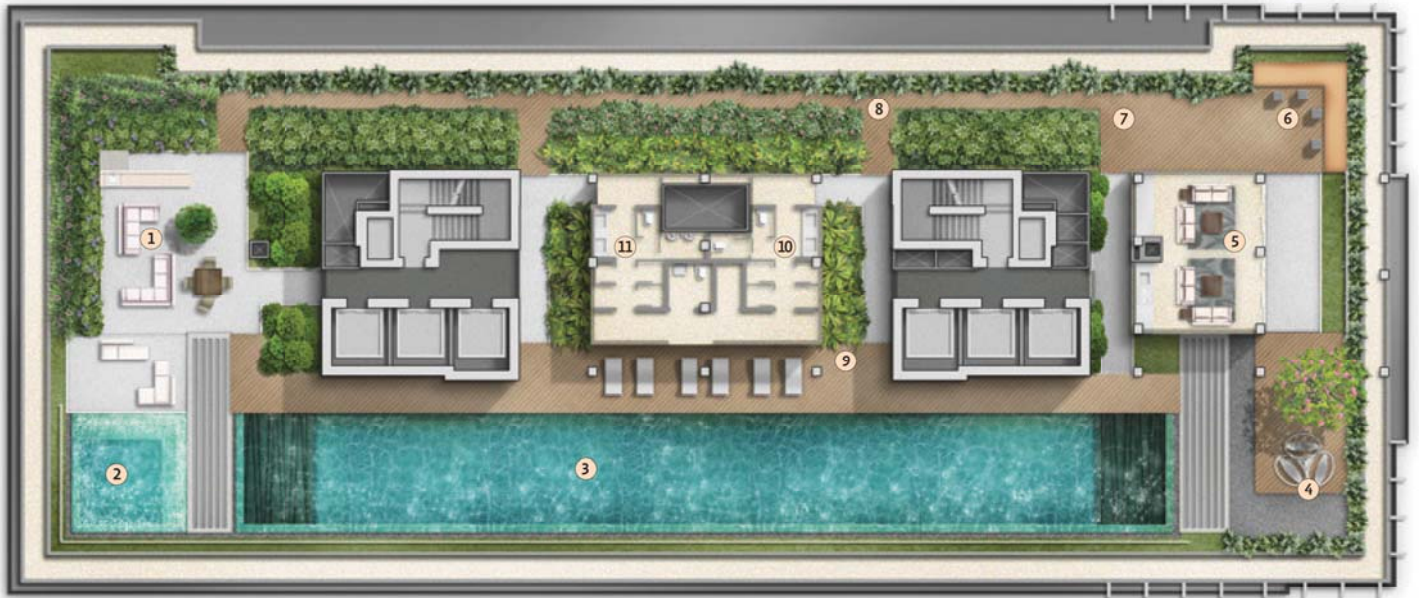
VOYAGE @ L24



- 1 Social Pod
- 2 Alfresco Bar
- 3 Tea Court
- 4 Terrace Lawn
- 5 Courtyard
- 6 Dining Pavilion



ODYSSEY@L40



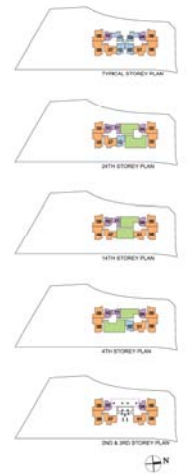
- | | |
|----------------------|-------------------------|
| 1 Party Lounge | 7 Sky Terrace |
| 2 Spa Pool | 8 Sky Walk |
| 3 Sky Pool | 9 Pool Deck |
| 4 Hammock Garden | 10 Female Changing Room |
| 5 Multi-purpose Room | 11 Male Changing Room |
| 6 Sky Lounge | |



UNITS DISTRIBUTION

		TOWER 28												
		01	02	03	04	05	06	07	08	09	10	11	12	
40 th		ODYSSEY												
39 th	C1Pb	B1Pb	B2P	A1P	C3-1P	C2-1P	C1Pb	C2P	C3P	A1P	B2P	B1Pb		
38 th	C1d	B1b	B2a	A1a	C3-1	C2-1	C1b	C2	C3	A1a	B2b	B1a		
37 th	C1d	B1g	B2d	A1a	C3-1	C2-1	C1c	C2	C3	A1e	B2e	B1e		
36 th	C1d	B1f	B2a	A1a	C3-1	C2-1	C1a	C2	C3	A1a	B2a	B1a		
35 th	C1d	B1b	B2a	A1a	C3-1	C2-1	C1b	C2	C3	A1a	B2b	B1a		
34 th	C1d	B1g	B2d	A1a	C3-1	C2-1	C1c	C2	C3	A1e	B2e	B1e		
33 th	C1d	B1f	B2a	A1a	C3-1	C2-1	C1a	C2	C3	A1a	B2a	B1a		
32 th	C1d	B1b	B2a	A1a	C3-1	C2-1	C1b	C2	C3	A1a	B2b	B1a		
31 th	C1d	B1g	B2d	A1a	C3-1	C2-1	C1c	C2	C3	A1e	B2e	B1e		
30 th	C1d	B1f	B2a	A1a	C3-1	C2-1	C1a	C2	C3	A1a	B2a	B1a		
29 th	C1d	B1f	B2b	A1a	C3-1	C2-1	C1a	C2	C3	A1d	B2a	B1b		
28 th	C1d	B1b	B2a	A1a	C3-1	C2-1	C1b	C2	C3	A1a	B2b	B1a		
27 th	C1e	B1g	B2f	A1a	C3-1	C2-1	C1c	C2	C3	A1c	B2c	B1d		
26 th				A1a	C3-1	C2-1	C1a	C2	C3	A1a	A2a	B1a		
25 th	VOYAGE			A1a	C3-1	C2-1	C1b	C2	C3	A1a	A2a	B1a		
24 th				A1a	C3-1	C2-1	C1c	C2	C3	A1b	A2b	B1c		
23 th	C1d	B1f	B2a	A1a	C3-1	C2-1	C1a	C2	C3	A1a	B2a	B1a		
22 th	C1d	B1f	B2a	A1a	C3-1	C2-1	C1b	C2	C3	A1a	B2b	B1a		
21 th	C1d	B1g	B2d	A1a	C3-1	C2-1	C1c	C2	C3	A1e	B2e	B1e		
20 th	C1d	B1f	B2a	A1a	C3-1	C2-1	C1a	C2	C3	A1a	B2a	B1a		
19 th	C1d	B1f	B2b	A1a	C3-1	C2-1	C1a	C2	C3	A1d	B2a	B1b		
18 th	C1d	B1f	B2a	A1a	C3-1	C2-1	C1b	C2	C3	A1a	B2b	B1a		
17 th	C1d	B1g	B2f	A1a	C3-1	C2-1	C1c	C2	C3	A1c	B2c	B1d		
16 th	C1d			A1a	C3-1	C2-1	C1a	C2	C3	A1a	A2a			
15 th	C1d	JOURNEY			A1a	C3-1	C2-1	C1b	C2	C3	A1a	A2a	JOURNEY	
14 th	C1d			A1a	C3-1	C2-1	C1c	C2	C3	A1b	A2b			
13 th	C1d	B1f	B2a	A1a	C3-1	C2-1	C1a	C2	C3	A1a	B2a	B1a		
12 th	C1d	B1f	B2a	A1a	C3-1	C2-1	C1b	C2	C3	A1a	B2b	B1a		
11 th	C1d	B1g	B2d	A1a	C3-1	C2-1	C1c	C2	C3	A1e	B2e	B1d		
10 th	C1d	B1f	B2a	A1a	C3-1	C2-1	C1a	C2	C3	A1a	B2a	B1a		
9 th	C1d	B1f	B2b	A1a	C3-1	C2-1	C1a	C2	C3	A1d	B2a	B1a		
8 th	C1d	B1f	B2a	A1a	C3-1	C2-1	C1b	C2	C3	A1a	B2b	B1a		
7 th	C1d	B1f	B2f	A1a	C3-1	C2-1	C1c	C2	C3	A1c	B2c	B1c		
6 th	C1d	B1f		A1a	C3-1	C2-1		C2	C3	A1a	A2a			
5 th	C1d	B1f	PASSAGE		A1a	C3-1	C2-1	PASSAGE		C2	C3	A1a	A2a	PASSAGE
4 th	C1d	B1f		A1a	C3-1	C2-1		C2	C3	A1b	A2b			
3 rd	C1d			A1a	C3-1	C2-1	C1a	C2	C3	A1a				
2 nd	C1d			A1a	C3-1	C2-1	C1a	C2	C3	A1a				
1 st	C1Cb			A1c	C3-1C	C2-1C	C1Ca	C2C	C3C	A1c				
81	DROP OFF													
82	CARPARK													
84														

- Legend**
- 1 BEDROOM
 - 2 BEDROOM
 - 3 BEDROOM
 - SKY TERRACE



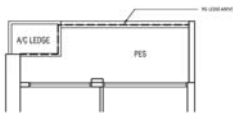


TYPE A1a

44 sqm (474 sqft)
#02-04 to #08-04

TYPE A1P

44 sqm (474 sqft)
#09-04



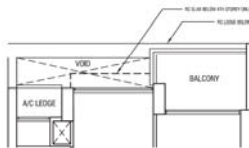
TYPE A1G

47 sqm (506 sqft)
#01-04



TYPE A2a

47 sqm (506 sqft)
#05-11, #06-11, #15-11, #16-11, #25-11
#26-11



TYPE A2b

47 sqm (506 sqft)
#04-11, #14-11, #24-11

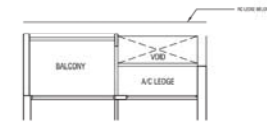


TYPE A1a

44 sqm (474 sqft)
#02-10, #03-10, #05-10, #06-10, #08-10,
#10-10, #12-10, #13-10, #15-10, #16-10,
#18-10, #20-10, #22-10, #23-10, #25-10,
#26-10, #28-10, #30-10, #32-10, #33-10,
#35-10, #36-10, #38-10

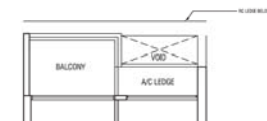
TYPE A1P

44 sqm (474 sqft)
#09-10



TYPE A1b

44 sqm (474 sqft)
#04-10, #14-10, #24-10



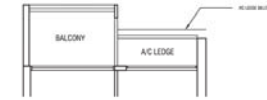
TYPE A1c

44 sqm (474 sqft)
#07-10, #17-10, #27-10



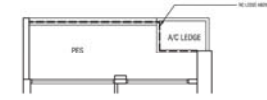
TYPE A1d

44 sqm (474 sqft)
#09-10, #19-10, #29-10



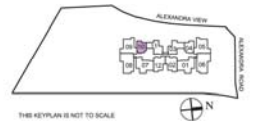
TYPE A1e

44 sqm (474 sqft)
#11-10, #21-10, #31-10, #34-10, #37-10



TYPE A1G

47 sqm (506 sqft)
#01-10



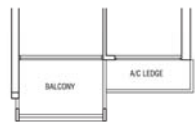
0 10 20 30
The above plan is subject to change as may be approved by relevant authorities.
All floor areas are approximate and subject to final survey.
Refer to key plan for 47, 107, 107 always on utility distribution page.

0 10 20 30
The above plan is subject to change as may be approved by relevant authorities.
All floor areas are approximate and subject to final survey.

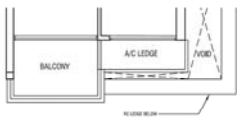
2-BEDROOM



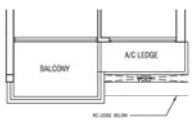
TYPE B1a
63 sqm (678 sqft)
#05-12, #09-12, #10-12, #12-12, #13-12, #18-12, #20-12, #22-12, #23-12, #25-12, #26-12, #28-12, #30-12, #32-12, #33-12, #35-12, #36-12, #38-12



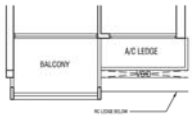
TYPE B1Pa
63 sqm (678 sqft)
#39-12



TYPE B1b
63 sqm (678 sqft)
#19-12, #29-12



TYPE B1c
63 sqm (678 sqft)
#07-12



TYPE B1d
63 sqm (678 sqft)
#11-12, #17-12, #27-12

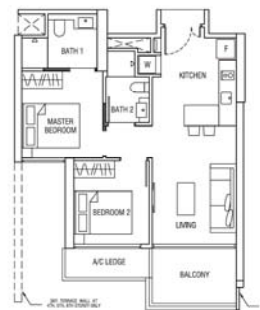
TYPE B1e
63 sqm (678 sqft)
#21-12, #24-12, #31-12, #34-12, #37-12



THIS KEYPLAN IS NOT TO SCALE

0 1m 2m 3m

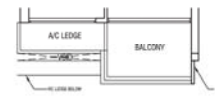
The above plan is subject to change as it may be approved by relevant authorities. All floor areas are approximate and subject to final survey.



TYPE B1f
63 sqm (678 sqft)
#04-02, #05-02, #06-02, #07-02, #08-02, #09-02, #10-02, #12-02, #13-02, #18-02, #19-02, #20-02, #22-02, #23-02, #29-02, #30-02, #33-02, #36-02



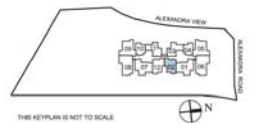
TYPE B1Pb
63 sqm (678 sqft)
#39-02



TYPE B1b
63 sqm (678 sqft)
#28-02, #32-02, #35-02, #38-02



TYPE B1g
63 sqm (678 sqft)
#11-02, #17-02, #21-02, #27-02, #31-02, #34-02, #37-02



THIS KEYPLAN IS NOT TO SCALE

0 1m 2m 3m

The above plan is subject to change as it may be approved by relevant authorities. All floor areas are approximate and subject to final survey.



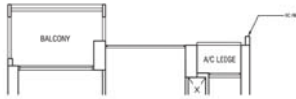
TYPE B2a
61 sqm (657 sqft)
#05-03, #10-03, #12-03, #13-03, #18-03
#20-03, #22-03, #23-03, #26-03, #30-03
#32-03, #33-03, #35-03, #36-03, #38-03

TYPE B2P
61 sqm (657 sqft)
#39-03

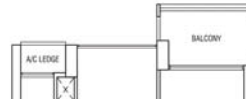


TYPE B2a
61 sqm (657 sqft)
#03-11, #10-11, #13-11, #19-11, #20-11
#23-11, #28-11, #30-11, #33-11, #36-11

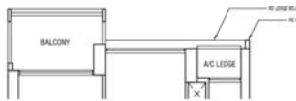
TYPE B2P
61 sqm (657 sqft)
#39-11



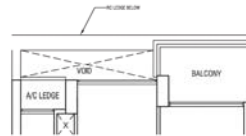
TYPE B2b
61 sqm (657 sqft)
#09-03, #19-03, #29-03



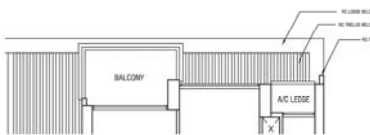
TYPE B2b
61 sqm (657 sqft)
#05-11, #12-11, #18-11, #22-11, #28-11,
#32-11, #35-11, #38-11



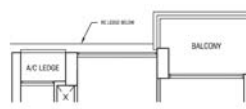
TYPE B2d
61 sqm (657 sqft)
#11-03, #21-03, #31-03, #34-03, #37-03



TYPE B2c
61 sqm (657 sqft)
#07-11, #17-11, #27-11



TYPE B2f
61 sqm (657 sqft)
#07-03, #17-03, #27-03



TYPE B2e
61 sqm (657 sqft)
#11-11, #21-11, #31-11, #34-11, #37-11



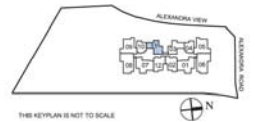
The above plan is subject to change as long as approved by relevant authorities.
All floor areas are approximately and subject to final survey.



THIS KEYPLAN IS NOT TO SCALE



The above plan is subject to change as long as approved by relevant authorities.
All floor areas are approximately and subject to final survey.



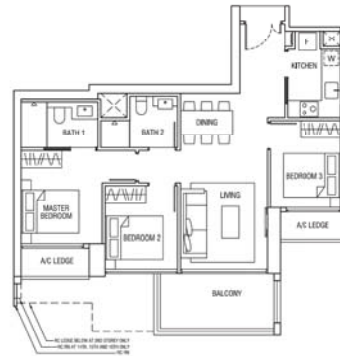
THIS KEYPLAN IS NOT TO SCALE

3-BEDROOM



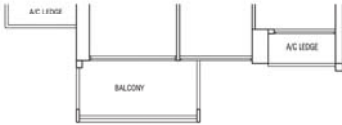
TYPE C1a
86 sqm (926 sqft)
#03-07, #03-07, #09-07, #10-07, #13-07, #16-07, #19-07, #20-07, #23-07, #26-07, #29-07, #30-07, #33-07, #36-07

TYPE C1Pa
86 sqm (926 sqft)
#39-07

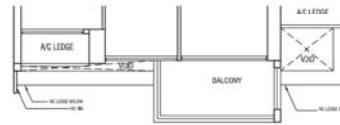


TYPE C1d
86 sqm (926 sqft)
#02-01 to #23-01, #28-01 to #38-01

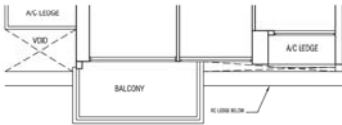
TYPE C1Pb
86 sqm (926 sqft)
#39-01



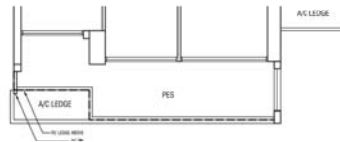
TYPE C1b
86 sqm (926 sqft)
#08-07, #12-07, #15-07, #18-07, #22-07, #25-07, #28-07, #32-07, #35-07, #38-07



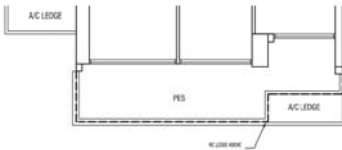
TYPE C1e
86 sqm (926 sqft)
#27-01



TYPE C1c
86 sqm (926 sqft)
#07-07, #11-07, #14-07, #17-07, #21-07, #24-07, #27-07, #31-07, #34-07, #37-07



TYPE C1Gb
96 sqm (1033 sqft)
#01-01



TYPE C1Ga
96 sqm (1033 sqft)
#01-07





3-BEDROOM



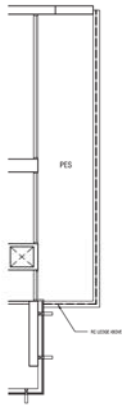
TYPE C2-1
97 sqm (1044 sqft)
#02-06 to #38-06

TYPE C2-1P
97 sqm (1044 sqft)
#39-06

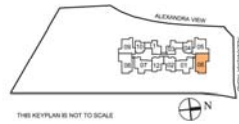


TYPE C2
95 sqm (1023 sqft)
#02-08 to #38-08

TYPE C2P
95 sqm (1023 sqft)
#39-08



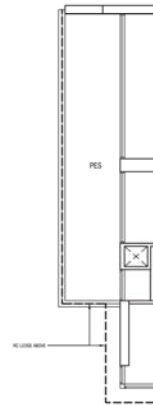
TYPE C2-1G
106 sqm (1141 sqft)
#01-06



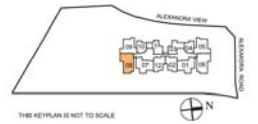
THIS KEYPLAN IS NOT TO SCALE

0 10 20 30

The above plan is subject to change as long as approved by relevant authorities. All floor areas are approximate and subject to final survey.



TYPE C2G
105 sqm (1130 sqft)
#01-08



THIS KEYPLAN IS NOT TO SCALE

0 10 20 30

The above plan is subject to change as long as approved by relevant authorities. All floor areas are approximate and subject to final survey.

3-BEDROOM



TYPE C3-1
84 sqm (904 sqft)
#02-05 to #38-05

TYPE C3-1P
84 sqm (904 sqft)
#39-05

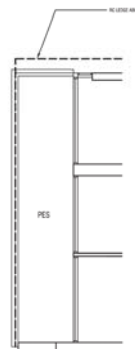


TYPE C3
82 sqm (883 sqft)
#02-09 to #38-09

TYPE C3P
82 sqm (883 sqft)
#39-09



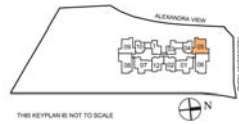
TYPE C3-1G
92 sqm (990 sqft)
#01-05



TYPE C3G
95 sqm (1023 sqft)
#01-09

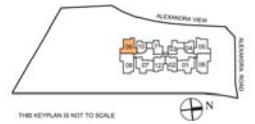
0 1m 2m 3m

The above plan is subject to change as it may be approved by relevant authorities. All floor areas are approximate and subject to final survey.



0 1m 2m 3m

The above plan is subject to change as it may be approved by relevant authorities. All floor areas are approximate and subject to final survey.



DEVELOPER'S PROFILE



LIVE. JOY.

One of Singapore's largest property players, Singapore Land Limited (SingLand) is synonymous with premier property developments, building homes with excellent form and function to deliver joy to homeowners.

SingLand has been setting the benchmark in the residential front with unique and exclusive developments. Notable successful launches include Mon Jervis, an exquisite gem nestled amongst the bounties of nature, the ideal address for those who dream of creating a private sanctuary to call home, one that is surrounded by the old world charm of Bishopgate / Jervis Road Good Class Bungalow area. Thomson Three, conveniently located in the heart of a prestigious district, nestled within a private residential enclave including Good Class Bungalows and other landed properties, lending itself well to the sophisticated and affluent. The Trizon, located in the lush Mount Sinai area and The Paterson near Orchard Road, Singapore's premier shopping and entertainment area. Other outstanding projects include The Sixth Avenue Residences in the prestigious and highly sought after Bukit Timah area, and Archipelago - a home in a park, nestled within the lush greenery of Bedok Reservoir Park.

In the pipeline of more new and exciting development is a luxurious home set within the privileged enclave of Farrer Drive, in the vicinity of the popular Holland Road. With SingLand, you can anticipate the joy of more quality and exciting residential developments in the near future.

SingLand also has about 2.2 million sqft of office space and nearly 1 million sqft of retail space across Singapore. Our portfolio includes Singapore Land Tower and Clifford Centre in the heart of Singapore's financial district, Raffles Place. The Gateway with its IM. Pei designed twin towers, SGX Centre which houses the Singapore Stock Exchange, as well as Marina Square, a large shopping, entertainment, hotel, and commercial complex close to the CBD. Other developments include West Mall, a suburban shopping mall in Bukit Batok, and office developments in Tampines Finance Park, Abacus Plaza and Tampines Plaza.

OTHER DEVELOPMENTS



POLLEN & BLEU RESIDENCES (Upcoming development)

Imagine a place where all things can be beautiful and great. A place where the birds chirp brighter, the grass is glossier and you revel in the echoes of children's laughter. Cascading water features, beautiful alcoves, gyms, bespoke playground and unique garden sculptures, green walls and more, meticulously spread out on three different levels for the enjoyment of the residents.



V ON SHENTON

UIC Limited unveils its flagship development, previously known as the UIC Building located at 5 Shenton Way. The twin tower development comprises a 23-storey office building and a 54-storey residential tower - V on Shenton.



MON JERVOIS

Located in the exclusive vicinity of embassies and good class bungalows in Bishopgate and Chatsworth Road, Mon Jervis is a five-storey boutique development with 109 units. The apartments come in a range of 6 beautifully designed unit types, namely, 1-bedroom + study, 2-bedroom, 2-bedroom loft units, 3-bedroom, 4-bedroom and the luxurious penthouse collection.



THOMSON THREE

Standing on a huge elevated land of approximately 345,000 sqft, enjoy the posh state-of-the-art condominium facilities that fit the lifestyle of you and your family.



THE TRIZON

In the serene and tranquil environment of one of Singapore's most coveted residential areas off Holland Road, The Trizon is just a few minutes' drive to Cold Storage Jelita, Holland Village, Dempsey Hill and the Orchard Road shopping belt.



ARCHIPELAGO

Archipelago is a home in a park, a park in a home. The low rise 5-storey condominium project is nestled within the lush greenery of Bedok Reservoir Park as well as conveniently located near the upcoming Bedok North MRT station.

SPECIFICATIONS

FOUNDATION

Reinforced concrete piles and/or raft and/or footings

SUPERSTRUCTURE

Reinforced concrete and/or steel structure

WALLS

- a External Wall: Reinforced concrete wall and/or common clay bricks and/or precast panels
- b Internal Wall: Reinforced concrete wall and/or common clay bricks and/or concrete blocks and/or lightweight/dry wall partition and/or precast panels
- c Boundary wall: Concrete wall and/or brick wall and/or fence

ROOF

- a Flat Roof: Reinforced concrete roof with appropriate waterproofing system

CEILING

- a Living/Dining, Master Bedroom, Bedrooms, Utility, PES and Balcony: Skim coat and/or where applicable plaster ceiling boards and/or box up to designated areas
- b Master Bath, Common Bath, Kitchen and WC: Moisture resistance ceiling boards with paint finish

FINISHES

- a Wall Finishes
 - (i) Living/Dining, Kitchen, Master Bedroom, Bedrooms, Utility, PES and Balcony: Cement & sand plaster and/or skim coat with paint finish and/or dry wall partition with paint finish
 - (ii) Master Bath, Common Bath, WC: Homogeneous and/or ceramic and/or porcelain tiles laid up to false ceiling height and on exposed surfaces only
- b Floor Finishes
 - (i) Living/Dining, Kitchen: Marble and/or homogeneous and/or ceramic and/or porcelain tiles
 - (ii) Master Bedroom, Bedrooms: Timber
 - (iii) Master Bath, Common Bath, Utility, WC, PES and Balcony: Homogeneous and/or ceramic and/or porcelain tiles
 - (iv) AC ledge: Cement and sand screed

WINDOWS

- a Powder-coated aluminum framed windows with appropriate glass

DOORS

- a Main Entrance: Fire-rated timber door
- b Master Bedroom, Bedrooms, Master Bath, Common Bath: Hollow-core timber door
- c Kitchen: Hollow-core timber door with vision panel
- d PES, Balcony: Powder-coated aluminum frame glass door
- e WC and Utility: Bi-fold and/or sliding door

SANITARY FITTINGS

- a Master Bath
 - 1 shower cubicle complete with shower mixer
 - 1 vanity top complete with a basin and mixer
 - 1 water closet
 - 1 mirror
- b Common Bath
 - 1 shower cubicle complete with shower mixer
 - 1 vanity top complete with a basin and mixer
 - 1 water closet
 - 1 mirror
- c WC
 - 1 shower set
 - 1 wash basin complete with tap
 - 1 water closet
- d Kitchen
 - 1 kitchen sink complete with tap

ELECTRICAL INSTALLATION

- a All electrical wiring in concealed conduit (whenever possible) except for electrical wiring above false ceiling

TV/TELEPHONE POINTS/ DATA POINTS

- a All TV/Tel wiring in concealed conduit (whenever possible) except for TV/Tel wiring above false ceiling

LIGHTNING PROTECTION

- a Lightning Protection System is in accordance with Singapore Standard S555:2010

PAINTING

- a External walls: Emulsion paint and/or textured coating finish to designated areas
- b Internal walls: Emulsion paint

WATERPROOFING

- a Waterproofing to be provided to floors of Kitchen, Master Bath, Common Bath, WC, PES, Balcony and where necessary

DRIVEWAY AND CARPARK

- a Surface Driveway: Premix and/or clay paving blocks and/or concrete
- b Basement Carpark: Concrete with floor hardener

RECREATIONAL FACILITIES

- a Discovery@L1
 - Porch
 - Plaza
 - BBQ Pavilion
 - Family Deck
 - Playpark
 - Pool Bar
 - b 2nd storey
 - Gymnasium
 - c Passage@L4
 - Meeting Square
 - Meeting Bar
 - d Journey@L14
 - Chillout Pod
 - Zen Garden
 - Brew House
 - Nature Deck
 - e Voyage@L24
 - Social Pod
 - Alfresco Bar
 - Tea Court
 - f Odyssey@L40
 - Party Lounge
 - Spa Pool
 - Sky Walk
 - Sky Pool
 - Sky Terrace
- | | |
|-------------------------|-----------------|
| - Sculpture Court | - Reading Patio |
| - Family Pool | - Chess Garden |
| - Lily Pond | - Putting Green |
| - Restroom | - Lounge Bar |
| - Terrace Lawn | |
| - Courtyard | |
| - Dining Pavilion | |
| - Sky Lounge | |
| - Multi-purpose Room | |
| - Hammock Garden | |
| - Male Changing Rooms | |
| - Female Changing Rooms | |

ADDITIONAL ITEMS

- a Kitchen Cabinets/Appliances:
 - (i) High and low level kitchen cabinets with solid surface worktop
 - (ii) Kitchen complete with cooker hood, oven, fridge and washer/dryer and
 - Ceramic Cooker Hob for Type A and B series
 - Cast Cooker Hob for Type C series
- b Wardrobes to all bedrooms
- c Air-conditioning: Split unit air-conditioning system to Living/Dining, Master Bedroom, Bedrooms
- d Mechanical Ventilation: Exhaust system for internal baths (where applicable)
- e Electrical water heater: Hot water supply to Master Bath, Common Bath and Kitchen in Type A and B series
- f Gas water heater:
 - Hot water supply to Master Bath, Common Bath, Kitchen and WC in Type C series
 - Type C1 - Outdoor Type
 - Type C2, C3 - Indoor Type
- g Town gas supply to Type C series only
- h Security System:
 - Security card access to lift lobby at 1st Storey and Basement and to gymnasium
 - Intercom system to all apartment units
- i Waste Disposal System: Pneumatic waste disposal system

www.alex.com.sg



24 Raffles Place #22-01/06 Clifford Centre Singapore 048621 Tel: (65) 6220 1352 / 6222 9312 Fax: (65) 6224 0278 / 6223 9056

Project Details: Singland Homes (Alexandra) Pte. Ltd. (Co. Reg. No. 201231242H) Developer's License No. C1076. Tenure of Land: 99 years wef 18th March 2013. Location: Lot 04043W T5 01 at Alexandra View. Expected Date of Vacant Possession: 28th Feb 2019. Expected Date of Legal Completion: 28th Feb 2022

While reasonable care has been taken in the preparation of this brochure and the plans attached, the developer and/or its agents shall not be held responsible for any inaccuracies or omissions therein. All visual representations including architectural models, drawings, illustrations, photographs, renderings and other graphics, representations portray artist's impressions only and not to be relied upon as statements or representations of fact. All floor areas are approximate measurements only and are subject to final survey. The materials and finishes to be used are subject to changes and availability. All information and specifications are current at the time of publication and are subject to change as may be required and do not form part of an offer or contract. The Sale & Purchase Agreement shall form the entire agreement between the developer and the purchaser, and shall in no way be modified by any statements or representations whether contained in this brochure or given by the developer's agents or otherwise.