



JOINTLY DEVELOPED BY:



SOLE MARKETING AGENT:



REST YOUR MIND,
FREE YOUR SOUL...
AN ABODE THAT
BRINGS YOU JOY
AND HAPPINESS
WHEREVER YOU GO.
DISCOVER A HOME
THAT TRULY MIRRORS
YOUR PERSONALITIES
AND DESIRES.

REST YOUR MIND,
FREE YOUR SOUL...
AN ABODE THAT
BRINGS YOU JOY
AND HAPPINESS
WHEREVER YOU GO.
DISCOVER A HOME
THAT TRULY MIRRORS
YOUR PERSONALITIES
AND DESIRES.



FREEHOLD | FOREIGNERS ELIGIBLE



A **FREEHOLD** development with 78 exclusive units spread over 8 storeys, Centra Residence is an exceptional investment both as a home and as an asset for the future. A plush abode that combines form and function to elevate the sophistication of your living space, experience the liberty to live with boundless luxury at Centra Residence.





**CONVENIENCE...
5 MINUTES TO
KALLANG
MRT STATION.**



Centra Residence is ideally sited
where all conveniences and indulgences are
in proximity. Simply **5 minutes from Kallang MRT station**,
accomplishing every desire has never been easier.



8 minutes to Marina Bay and CBD



5 minutes to Kallang MRT station



8 minutes to Marina Bay Golf Course



11 minutes to Orchard Road



CENTRA RESIDENCE

6 minutes to Singapore Flyer



Residing by the city-edge envelops you within the best of both worlds, with the glamour of metropolis living and the excitement of coastal recreation similarly accessible.

8 minutes to East Coast Park



CENTRA RESIDENCE

**FREEDOM...
ONE LIFE, MANY
DESTINATIONS.**



Conveniently connected to **Kallang MRT**

station, Pan-Island Expressway (**PIE**), East Coast

Parkway (**ECP**) and Kallang-Paya Lebar Expressway (**KPE**).

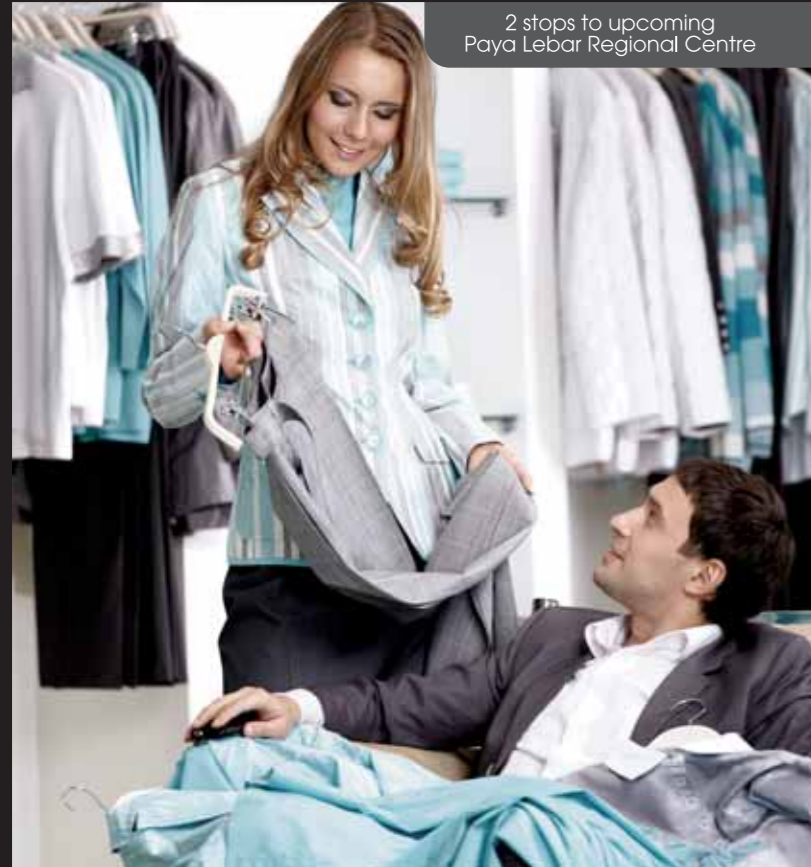
Centra Residence is just moments away from everywhere that matters.

FROM KALLANG MRT STATION...

FREEDOM... ONE LIFE, MANY DESTINATIONS.



5 stops to Marina Bay Sands



2 stops to upcoming
Paya Lebar Regional Centre



2 stops to Bugis Junction



3 stops to The Esplanade



8 stops to Resorts World Sentosa



8 stops to Changi International Airport





CENTRA RESIDENCE



FOOD HAVEN
Surrounded by renowned eateries and restaurants, delectable food is readily available.



RETAIL
Shopping needs are easily met by surrounding shops and nearby Paya Lebar Regional Centre.



ENTERTAINMENT
The urban rapture of Orchard Road, Singapore Flyer, The Esplanade, Bugis and Parkway Parade are just short drives away.



INTEGRATED RESORTS
Conveniently close-by Marina Bay Sands and Resorts World Sentosa keep you entertained any time of the day.



OUTDOOR RECREATION
Stroll along the sandy beach at nearby East Coast Park, take a walk around the upcoming Gardens by the Bay, or gather your friends for a game of golf at Marina Bay Golf Course.



TRAVEL
Proximity to Changi International Airport complements your jet-setting lifestyle. Your business travels and holiday tours are made more convenient at Centra Residence.



BUSINESS
Going to work at the Central Business District takes just minutes via Nicoll Highway.



ACCESSIBILITY
Connecting to the rest of the island by car is a breeze via the ECP, PIE and KPE, all within easy reach.



With pampering facilities at your beck and call round the clock, be engulfed in non-stop exhilaration at Centra Residence. Have an invigorating work out at the **Gymnasium**, soak up the sun by the **Pool Deck**, take a dip in the **Jacuzzi** or relax with a refreshing swim in the **25 metres Pool**.

Your choice of entertainment is limitless.



Facilities



LEGEND

- A Jacuzzi
- B 25 metres Swimming Pool
- C Pool Deck
- D Pool Shower
- E Gymnasium
- F Landscaping
- G Pedestrian Gate
- H BBQ Area
- J Car Park





Centra Residences has a wide choice of apartments and penthouses to suit the different needs of every home owner or investor.

Choose from a wide array of choices such as:

APARTMENTS – A wide selection of 1 bedroom (TYPE A), 1+ Guest/Study (TYPE B i.e. 1-bedroom plus an adjoining space for guest room or study) or 2 bedrooms (TYPE C), in diverse sizes and configurations.

DUPLEX APARTMENT – Only one unit has been exclusively designed as a 2-storey duplex apartment (TYPE D). This unit enjoys a high double volume space of 6 metres over both the Living and Dining Room, creating a very spacious feel. This 2-bedroom duplex comes with 2 ensuite bedrooms with attached bathrooms.

TRIPLEX PENTHOUSES – These magnificent penthouses are uniquely designed as 3-storey triplex penthouse units (TYPE PH). The penthouses come with your very own Private Pool and personal Pool Deck. Most of the penthouses enjoy other unique features such as high double volume spaces, Sanctuary Terrace and Private Roof Gardens.



Triplex Penthouses



Special Design Features

Each penthouse is specially designed to meet the lifestyle needs of every individual. Each of the special 3-storey high Penthouses will have one or more of the following unique design features:

- **3-storey high** with Master Bedroom nestled exclusively on the top floor
- **Private Pool and Deck** for your personal indulgence
- **Sanctuary Terrace** for creation of your personal oasis
- **Private Roof Terrace** as your balcony or your own garden in the air
- **Double Volume High Ceiling** either over your living room or bedroom

CROSS-SECTION VIEW OF THE TRIPLEX PENTHOUSES

Enjoy the freedom to design your private oasis. Assemble a Jacuzzi, rear a pond of kois, paint your personal sanctuary terrace in every shade and hue. Anything you want, it is yours to have.

Enjoy the luxury of double volume ceiling over the living room or bedroom. Indulge in the prestige and luxury of owning your private pool and deck.



Artist's Impression



Artist's Impression

Premium Fittings



The modern kitchen comes fully equipped with state-of-the-art German BOSCH appliances. BOSCH offers superior quality, advance technology, ease of operation and superior longevity, earning the brand numerous international awards and accolades.

With the fridge and washer-cum-dryer fully integrated into the kitchen cabinets, it creates clean and neat lines in your home. The electric ceramic hob and hood further enhance your experience in the kitchen.



Latest design toilet tap fittings from GROHE combines form and function to heighten your experience at home.



Your kitchen cabinets are endowed with soft-closing kitchen systems from BLUM, so that the drawers and doors close smoothly with a simple touch. This high quality and user friendly mechanism ensures the exquisite feel of your kitchen furniture



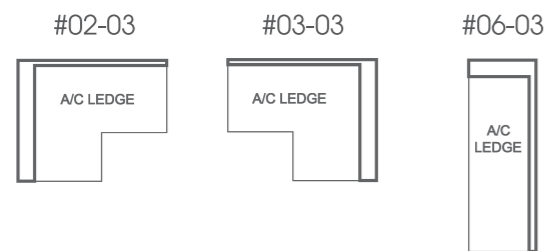
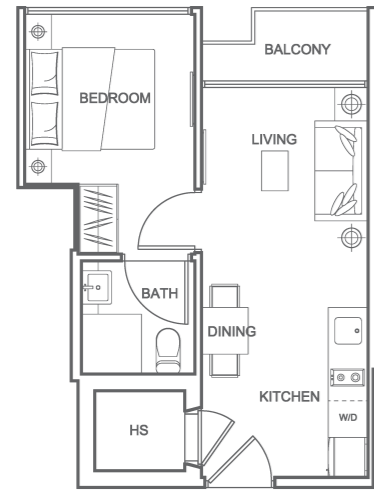
Finishing the exquisite touches are modern DURAVIT sanitary wares from Germany.



1-BEDROOM

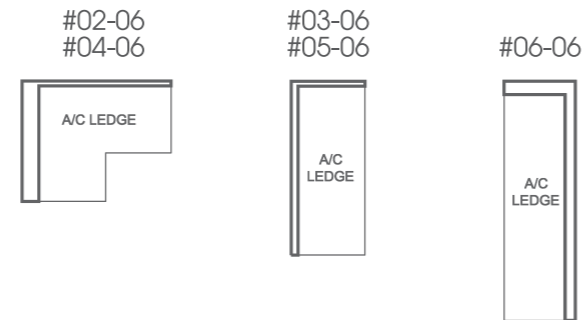
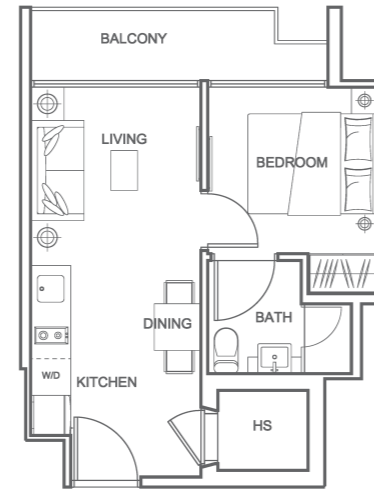
TYPE A1

Unit #02-03, #03-03, #06-03
Area 36 sqm / 388 sqft



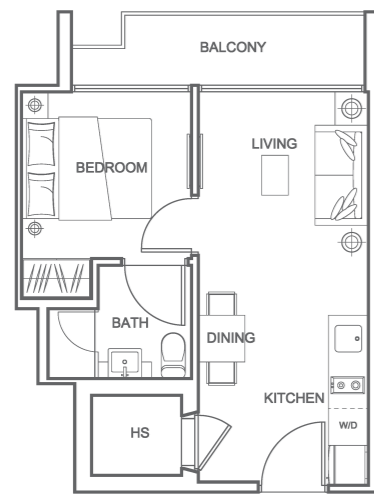
TYPE A2

Unit #02-06 to #06-06
Area 37 sqm / 398 sqft



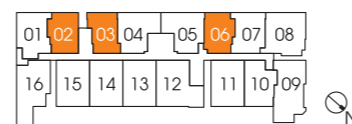
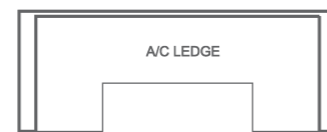
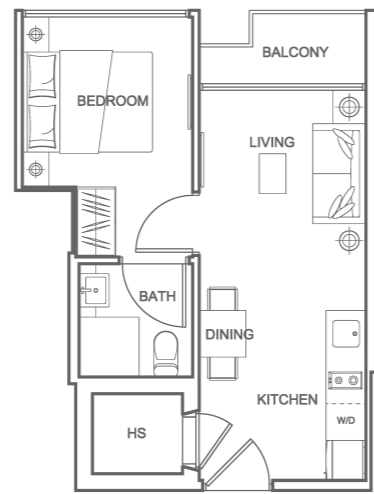
TYPE A3

Unit #06-02
Area 38 sqm / 409 sqft



TYPE A4

Unit #04-03 to #05-03
Area 39 sqm / 420 sqft



All plans are inclusive of a/c ledge, balcony and void space, where applicable. The plans are subject to change as may be required or approved by the relevant authorities. Plans are not drawn to scale and are for the purpose of a visual presentation of the different layouts that are available. Areas are estimates only and are subject to final survey.

1-BEDROOM

TYPE A5

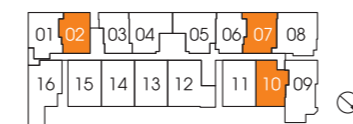
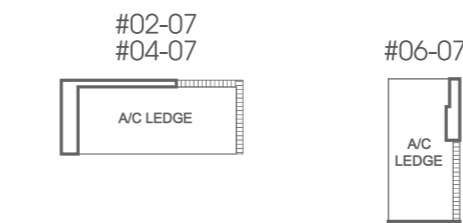
Unit #02-02 to #05-02
Area 39 sqm / 420 sqft



1-BEDROOM + GUEST/STUDY

TYPE B2

Unit #02-07, #04-07, #06-07
Area 40 sqm / 431 sqft

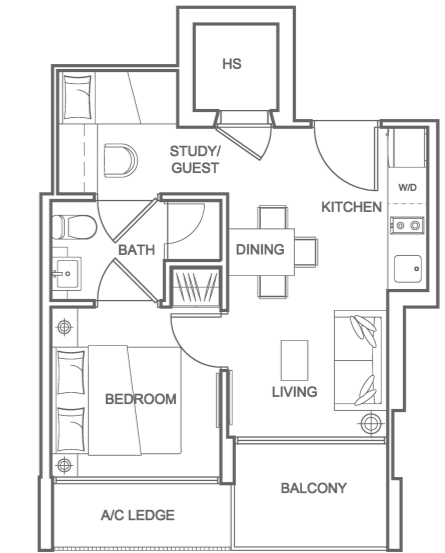


All plans are inclusive of a/c ledge, balcony and void space, where applicable. The plans are subject to change as may be required or approved by the relevant authorities. Plans are not drawn to scale and are for the purpose of a visual presentation of the different layouts that are available. Areas are estimates only and are subject to final survey.

1-BEDROOM + GUEST/STUDY

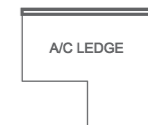
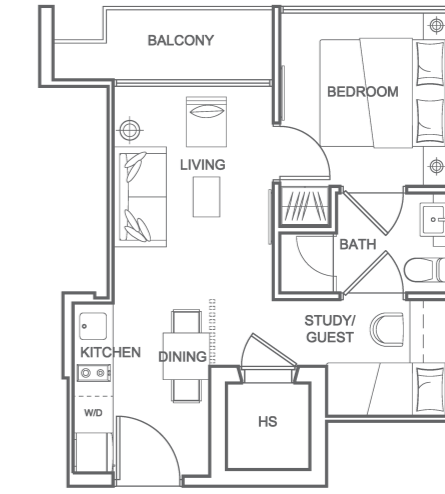
TYPE B1

Unit #05-10 to #06-10
Area 40 sqm / 431 sqft



TYPE B3

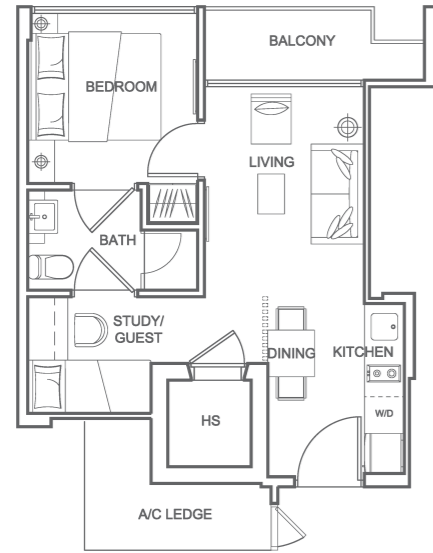
Unit #03-07, #05-07
Area 41 sqm / 441 sqft



1-BEDROOM + GUEST/STUDY

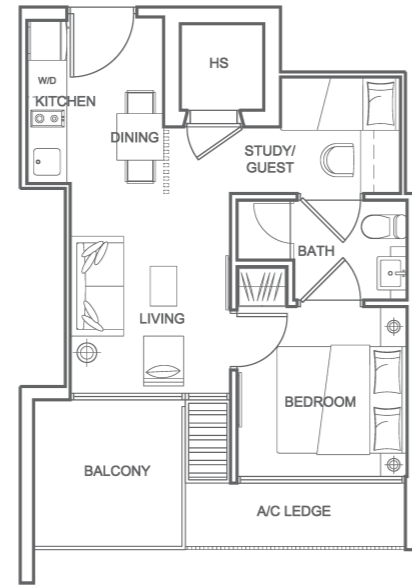
TYPE B4

Unit #02-01 to #06-01
Area 42 sqm / 452 sqft



TYPE B5

Unit #05-11 to #06-11, #05-13, #05-15 to #06-15
Area 42 sqm / 452 sqft



1-BEDROOM + GUEST/STUDY

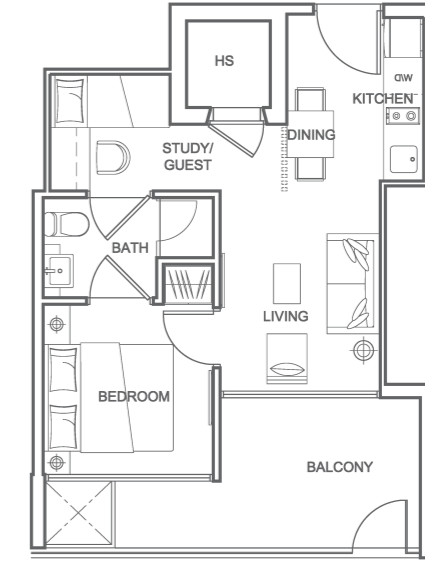
TYPE B8

Unit #06-16
Area 42 sqm / 452 sqft



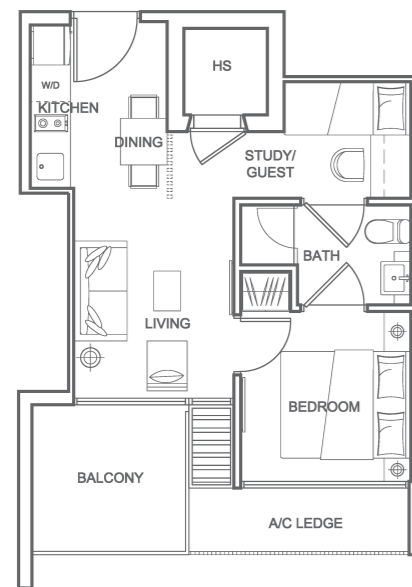
TYPE B9

Unit #04-12, #04-14
Area 43 sqm / 463 sqft



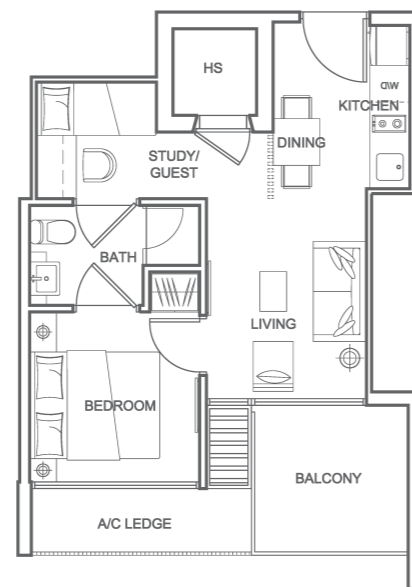
TYPE B6

Unit #06-13
Area 42 sqm / 422 sqft



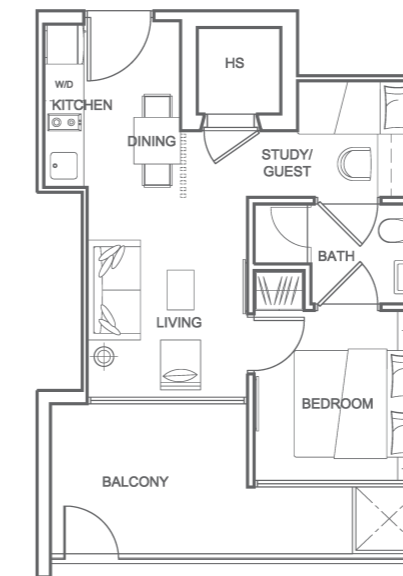
TYPE B7

Unit #05-14 to #06-14
Area 42 sqm / 452 sqft



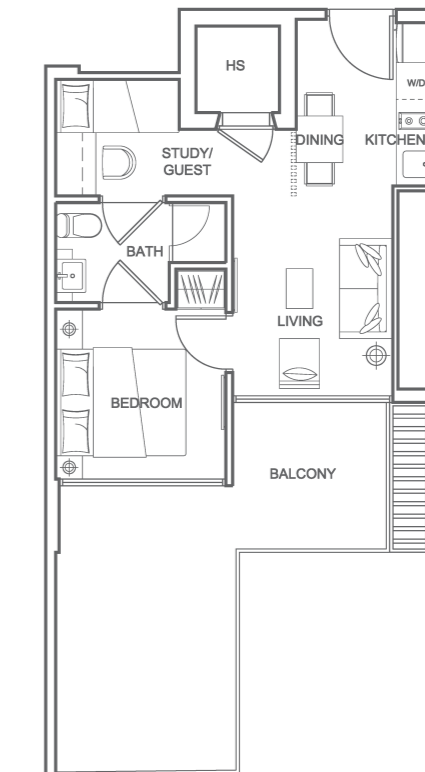
TYPE B10

Unit #04-13, #04-15
Area 43 sqm / 463 sqft

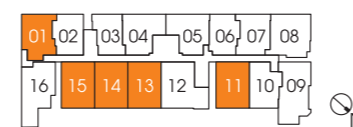


TYPE B11

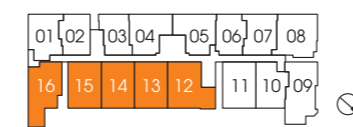
Unit #05-16
Area 51 sqm / 549 sqft



All plans are inclusive of a/c ledge, balcony and void space, where applicable. The plans are subject to change as may be required or approved by the relevant authorities. Plans are not drawn to scale and are for the purpose of a visual presentation of the different layouts that are available. Areas are estimates only and are subject to final survey.



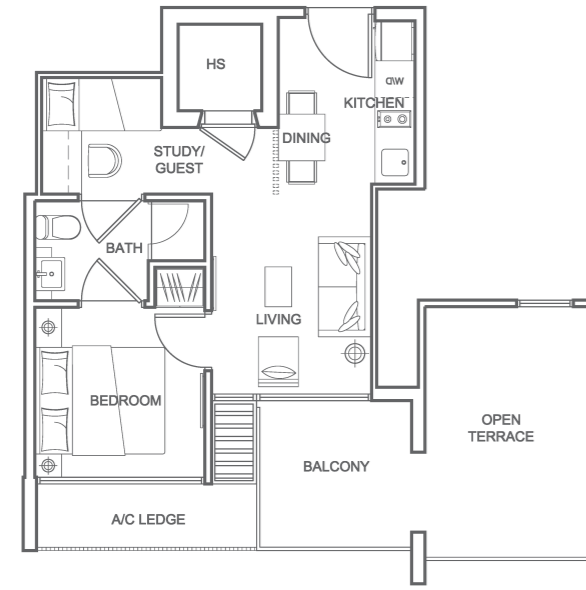
All plans are inclusive of a/c ledge, balcony and void space, where applicable. The plans are subject to change as may be required or approved by the relevant authorities. Plans are not drawn to scale and are for the purpose of a visual presentation of the different layouts that are available. Areas are estimates only and are subject to final survey.



1-BEDROOM + GUEST/STUDY

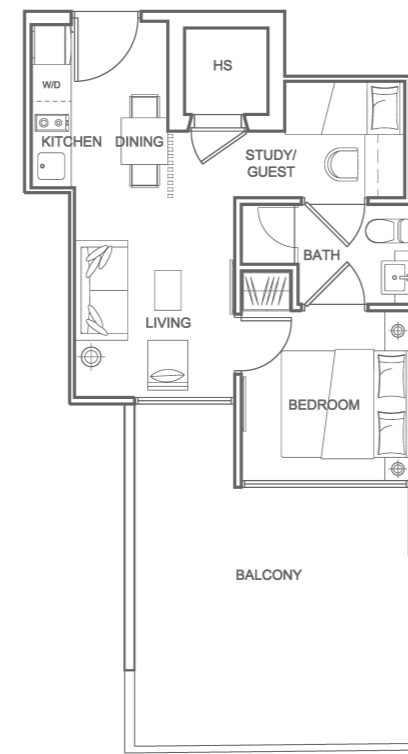
TYPE B12

Unit #05-12
Area 52 sqm / 560 sqft



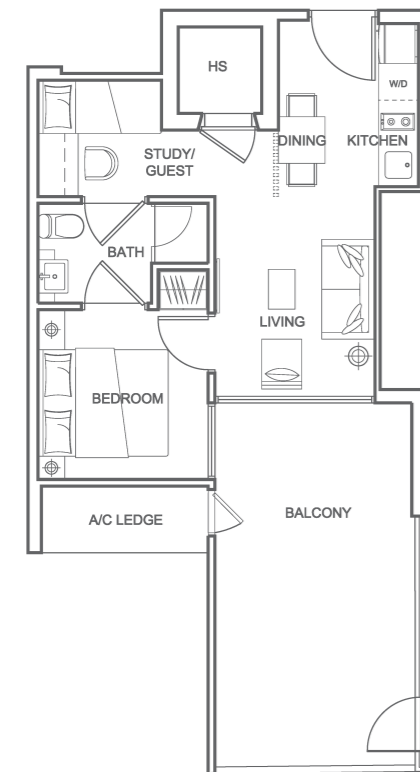
TYPE B13

Unit #04-11
Area 53 sqm / 570 sqft



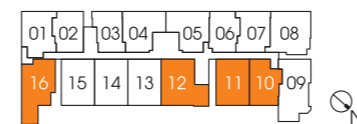
TYPE B14

Unit #04-16
Area 54 sqm / 581 sqft



TYPE B15

Unit #04-10
Area 55 sqm / 592 sqft

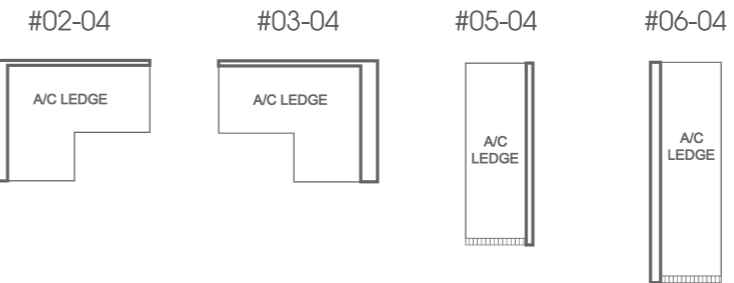
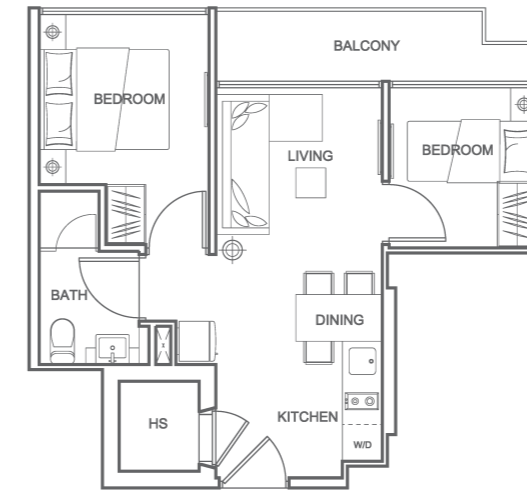


All plans are inclusive of a/c ledge, balcony and void space, where applicable. The plans are subject to change as may be required or approved by the relevant authorities. Plans are not drawn to scale and are for the purpose of a visual presentation of the different layouts that are available. Areas are estimates only and are subject to final survey.

2-BEDROOM

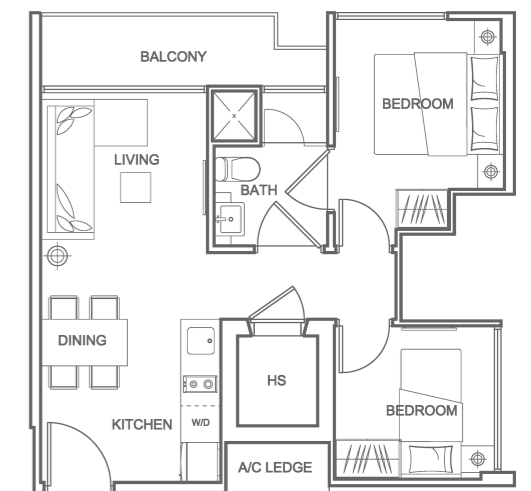
TYPE C1

Unit #02-04 to #03-04, #05-04 to #06-04
Area 47 sqm / 506 sqft



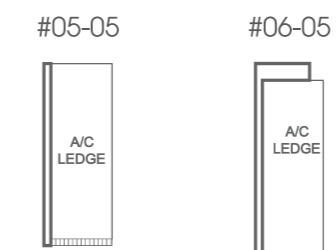
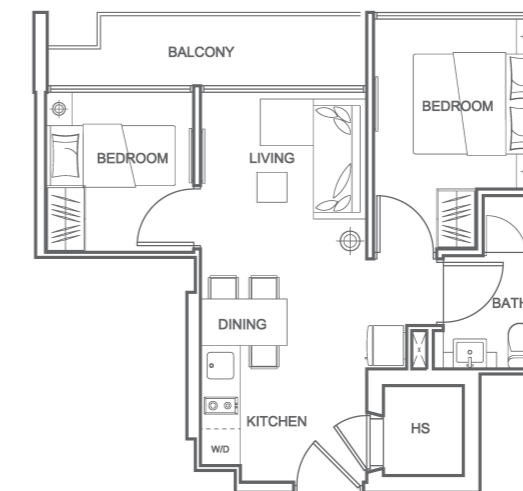
TYPE C2

Unit #04-08
Area 47 sqm / 506 sqft



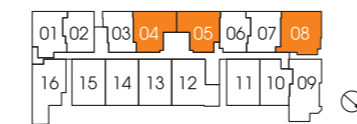
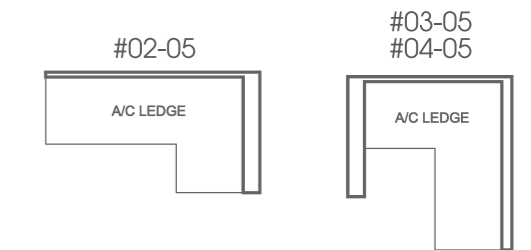
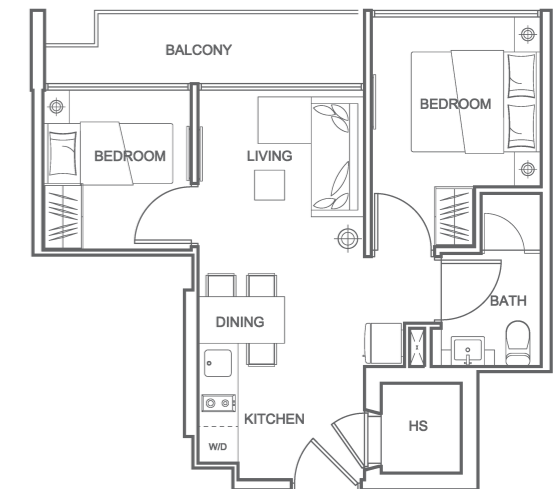
TYPE C3

Unit #05-05 to #06-05
Area 47 sqm / 506 sqft



TYPE C4

Unit #02-05 to #04-05
Area 48 sqm / 517 sqft

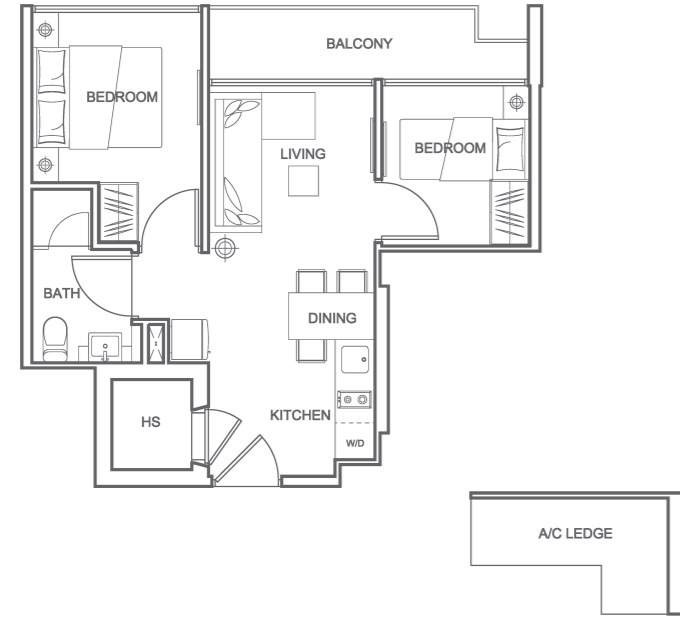


All plans are inclusive of a/c ledge, balcony and void space, where applicable. The plans are subject to change as may be required or approved by the relevant authorities. Plans are not drawn to scale and are for the purpose of a visual presentation of the different layouts that are available. Areas are estimates only and are subject to final survey.

2-BEDROOM

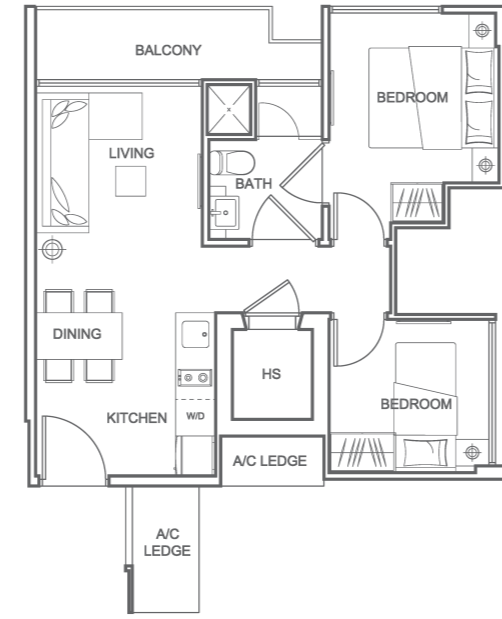
TYPE C5

Unit #04-04
Area 48 sqm / 517 sqft



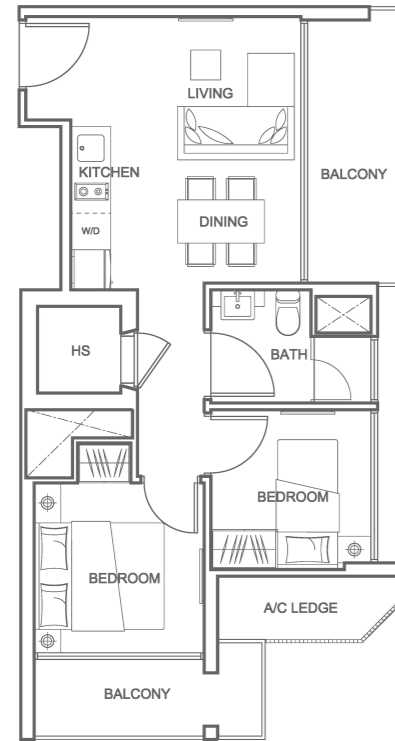
TYPE C6

Unit #02-08 to #03-08
Area 49 sqm / 527 sqft



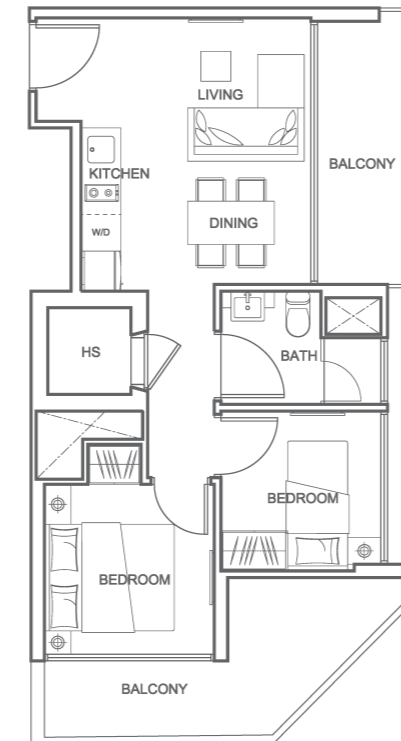
TYPE C7

Unit #05-09 to #06-09
Area 54 sqm / 581 sqft



TYPE C8

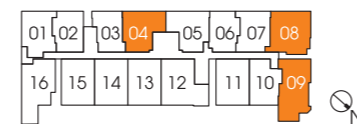
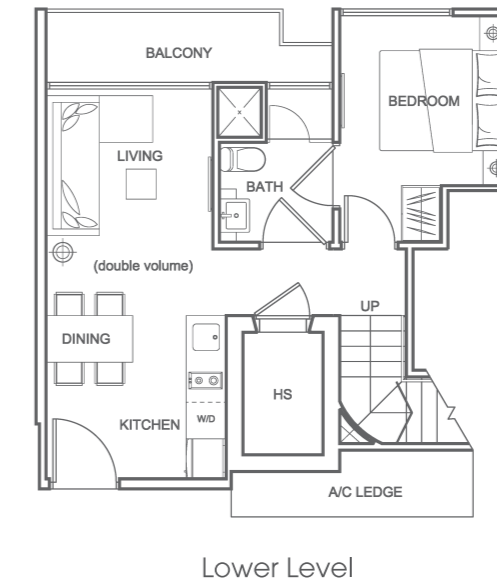
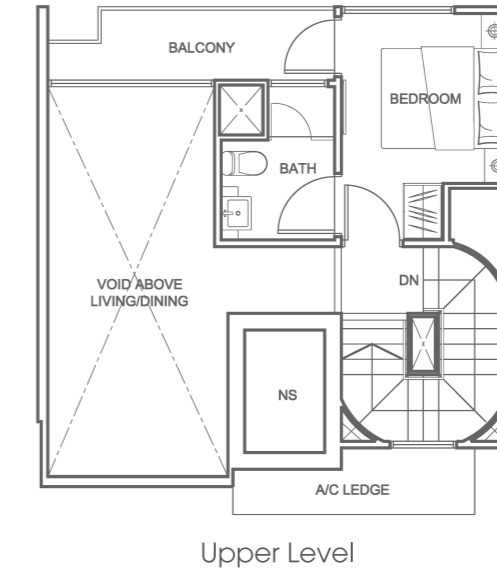
Unit #04-09
Area 55 sqm / 592 sqft



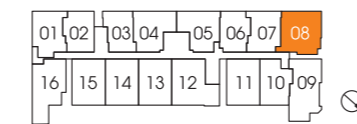
2-BEDROOM DUPLEX APARTMENT

TYPE D

Unit #05-08
Area 98 sqm / 1055 sqft



All plans are inclusive of a/c ledge, balcony and void space, where applicable. The plans are subject to change as may be required or approved by the relevant authorities. Plans are not drawn to scale and are for the purpose of a visual presentation of the different layouts that are available. Areas are estimates only and are subject to final survey.

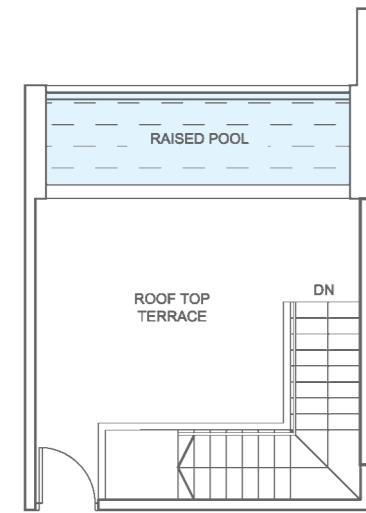


All plans are inclusive of a/c ledge, balcony and void space, where applicable. The plans are subject to change as may be required or approved by the relevant authorities. Plans are not drawn to scale and are for the purpose of a visual presentation of the different layouts that are available. Areas are estimates only and are subject to final survey.

1-BEDROOM + GUEST/STUDY TRIPLEX PENTHOUSE

TYPE PHa1

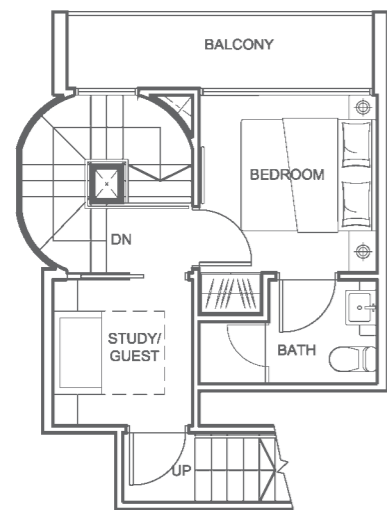
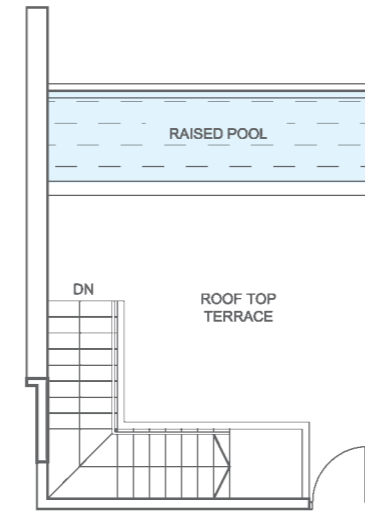
Unit #07-02
Area 89 sqm / 958 sqft



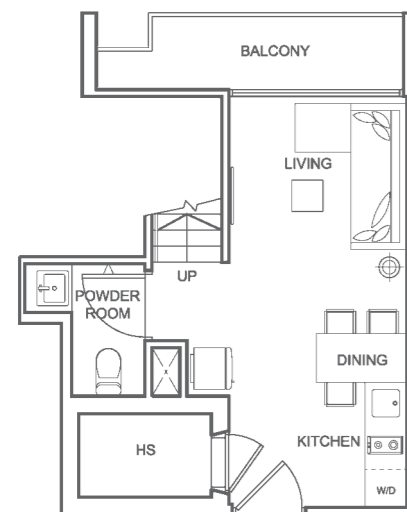
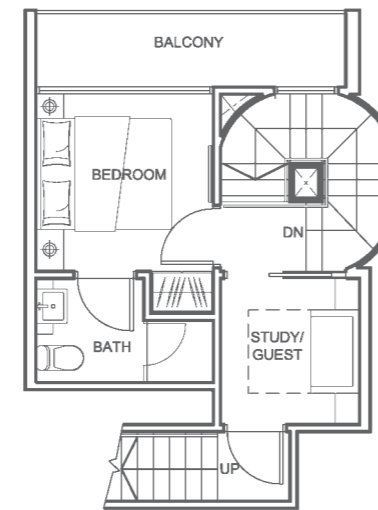
Roof Terrace Level

TYPE PHa2

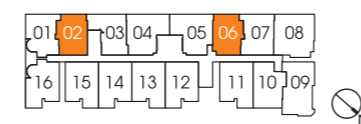
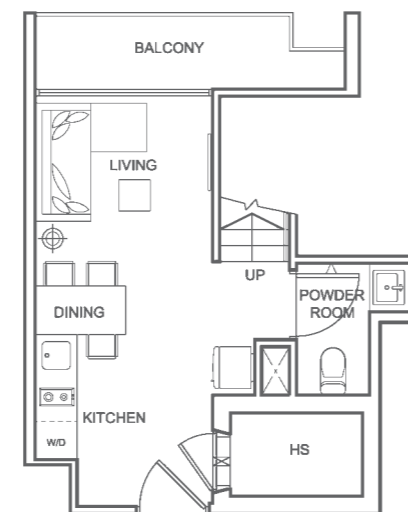
Unit #07-06
Area 89 sqm / 958 sqft



Upper Level



Lower Level

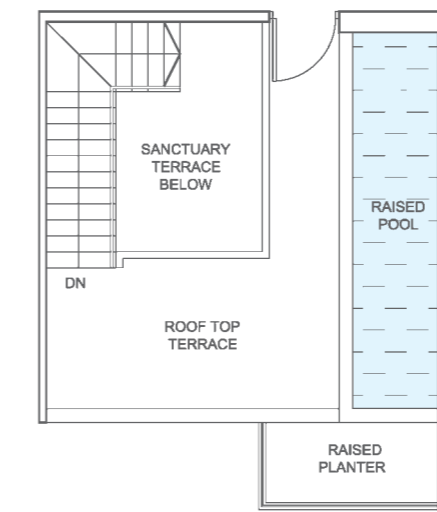


All plans are inclusive of a/c ledge, balcony and void space, where applicable. The plans are subject to change as may be required or approved by the relevant authorities. Plans are not drawn to scale and are for the purpose of a visual presentation of the different layouts that are available. Areas are estimates only and are subject to final survey.

2-BEDROOM TRIPLEX PENTHOUSE

TYPE PHb1

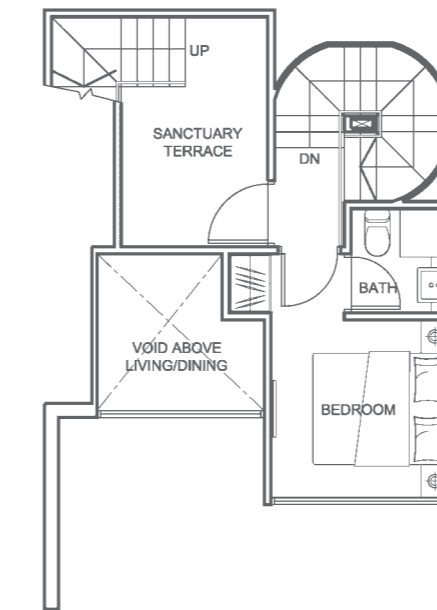
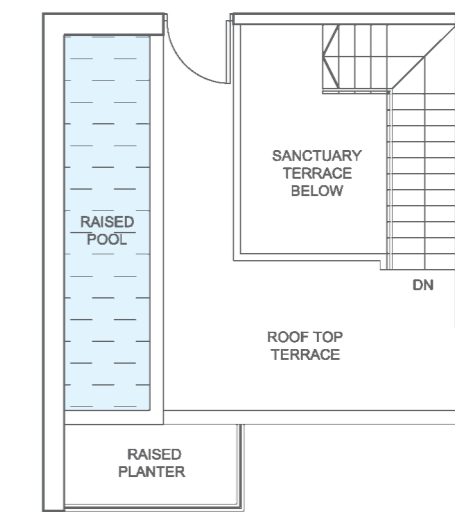
Unit #07-11, #07-13, #07-15
Area 99 sqm / 1066 sqft



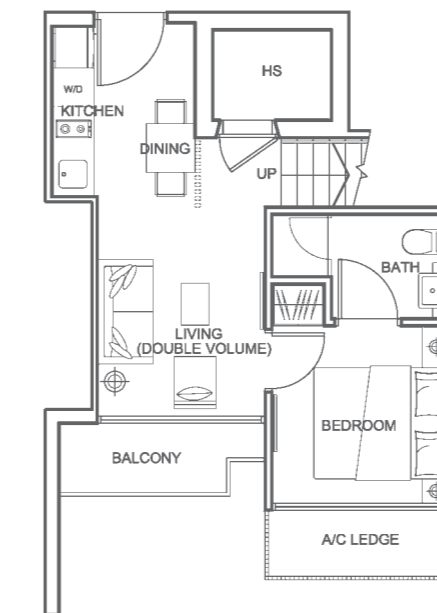
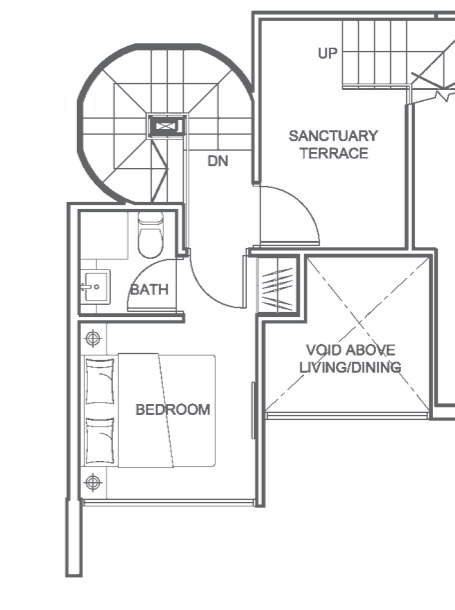
Roof Terrace Level

TYPE PHb2

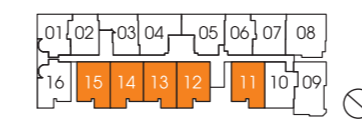
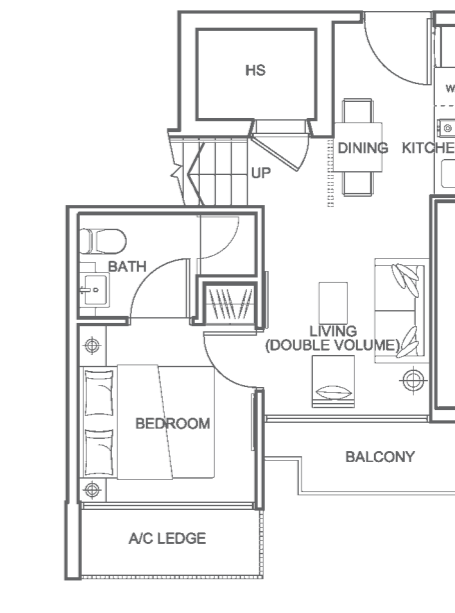
Unit #07-12, #07-14
Area 99 sqm / 1066 sqft



Upper Level



Lower Level

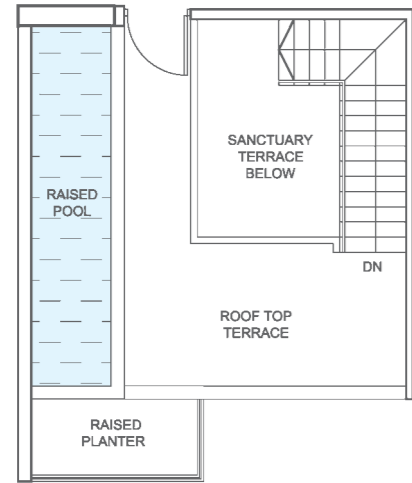


All plans are inclusive of a/c ledge, balcony and void space, where applicable. The plans are subject to change as may be required or approved by the relevant authorities. Plans are not drawn to scale and are for the purpose of a visual presentation of the different layouts that are available. Areas are estimates only and are subject to final survey.

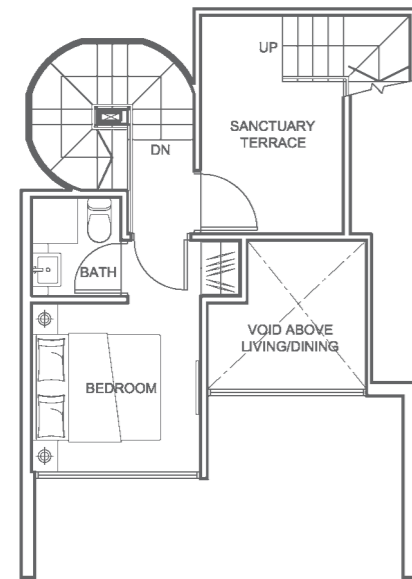
2-BEDROOM TRIPLEX PENTHOUSE

TYPE PHb3

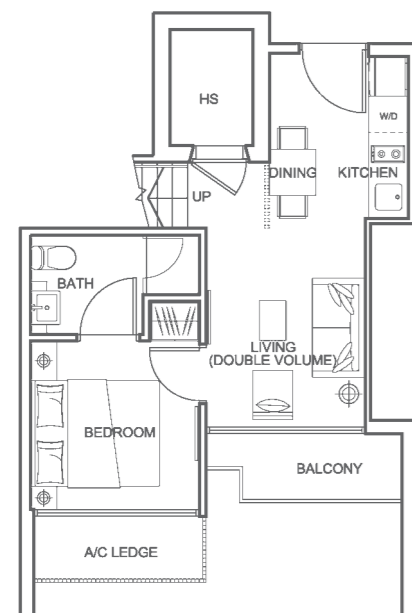
Unit #07-16
Area 99 sqm / 1066 sqft



Roof Terrace Level



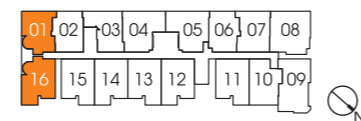
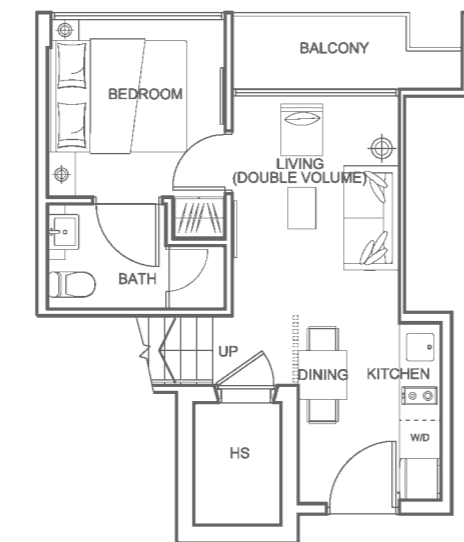
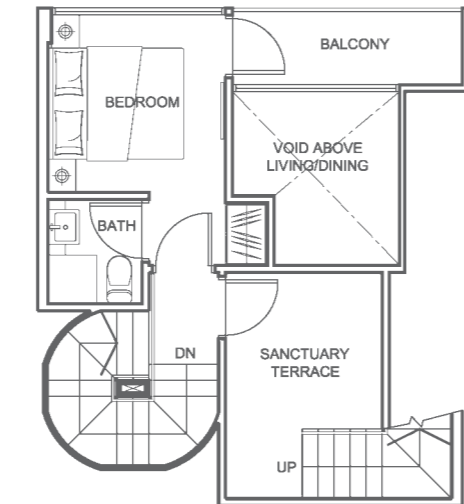
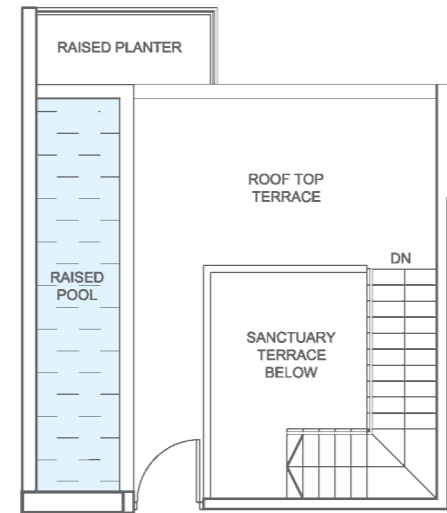
Upper Level



Lower Level

TYPE PHb4

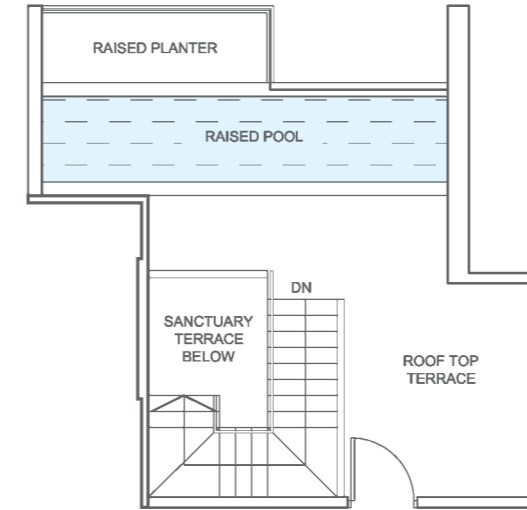
Unit #07-01
Area 103 sqm / 1109 sqft



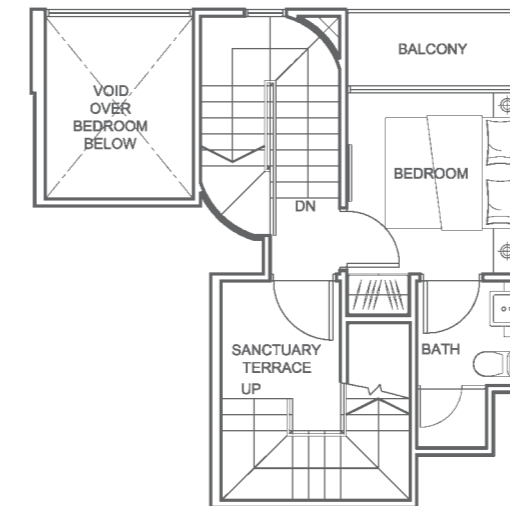
2-BEDROOM TRIPLEX PENTHOUSE

TYPE PHb5

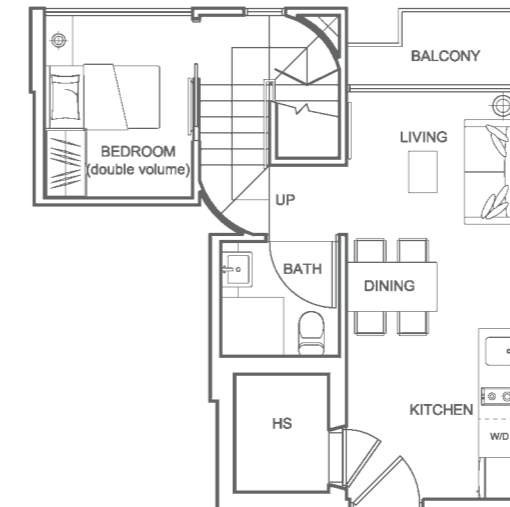
Unit #07-03
Area 102 sqm / 1098 sqft



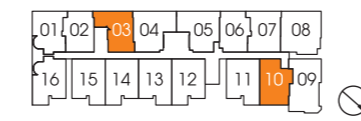
Roof Terrace Level



Upper Level

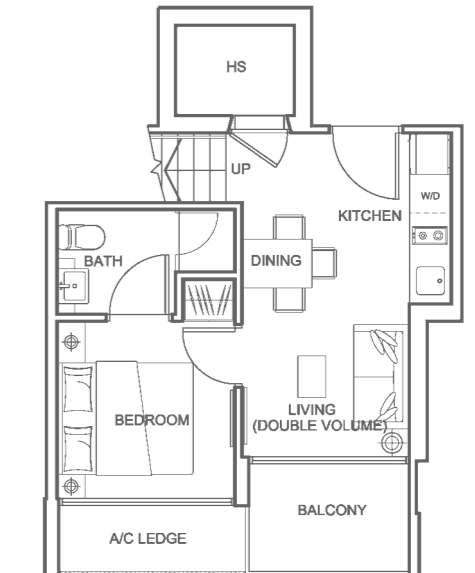
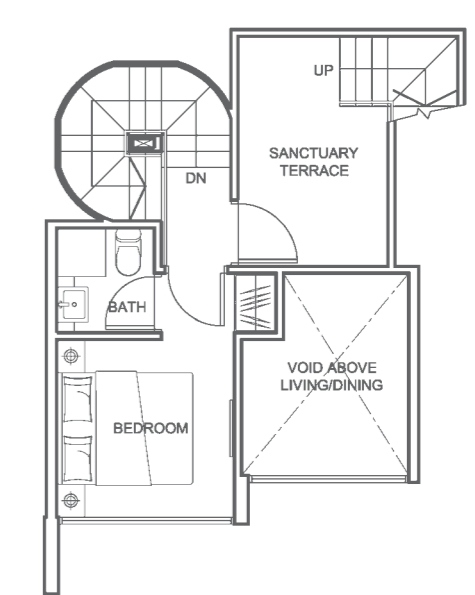
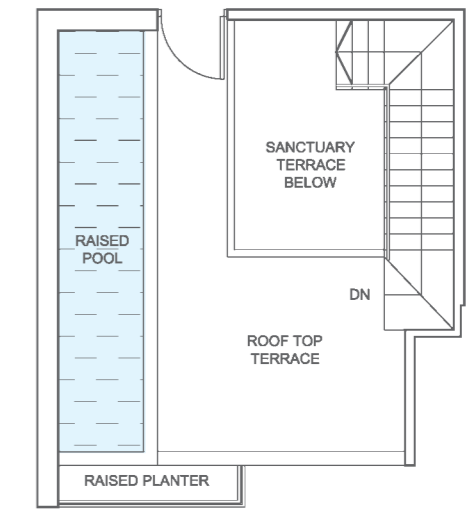


Lower Level



TYPE PHb6

Unit #07-10
Area 103 sqm / 1109 sqft



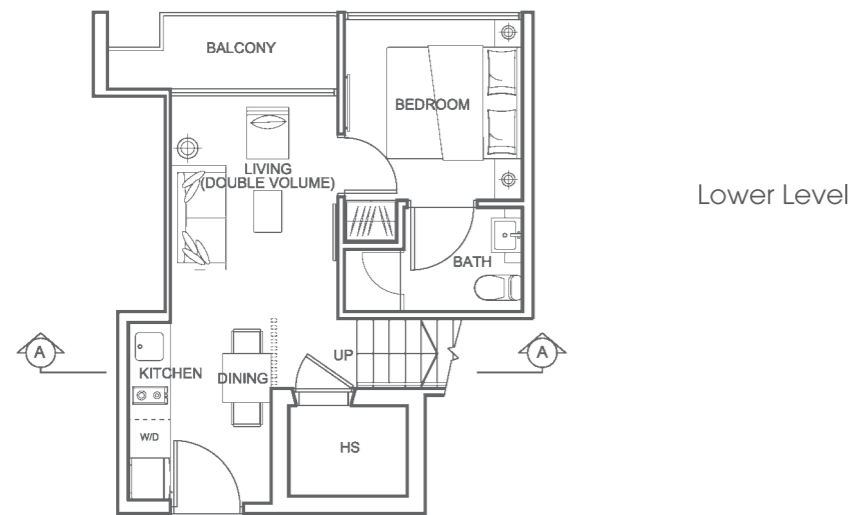
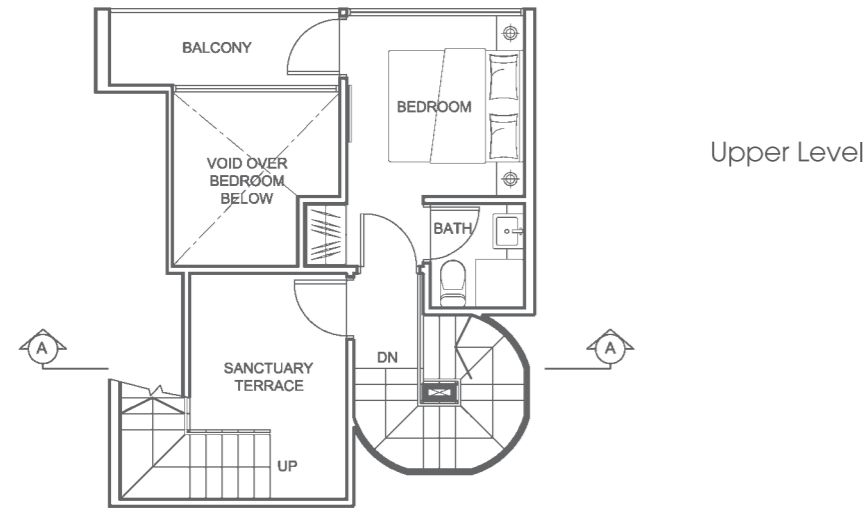
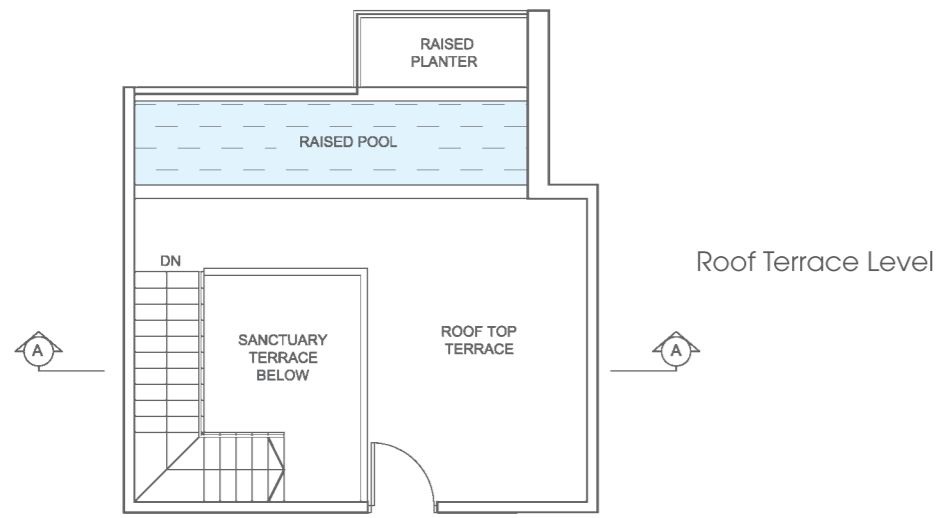
All plans are inclusive of a/c ledge, balcony and void space, where applicable. The plans are subject to change as may be required or approved by the relevant authorities. Plans are not drawn to scale and are for the purpose of a visual presentation of the different layouts that are available. Areas are estimates only and are subject to final survey.

All plans are inclusive of a/c ledge, balcony and void space, where applicable. The plans are subject to change as may be required or approved by the relevant authorities. Plans are not drawn to scale and are for the purpose of a visual presentation of the different layouts that are available. Areas are estimates only and are subject to final survey.

2-BEDROOM TRIPLEX PENTHOUSE

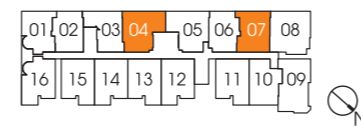
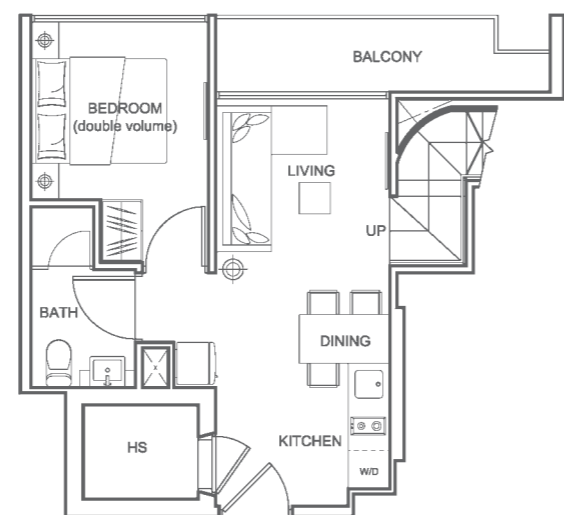
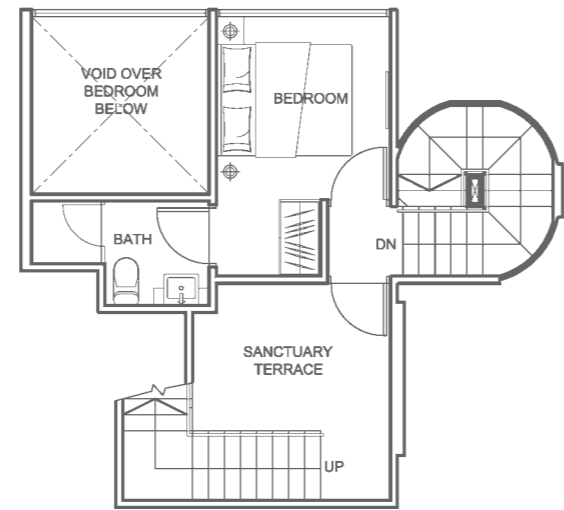
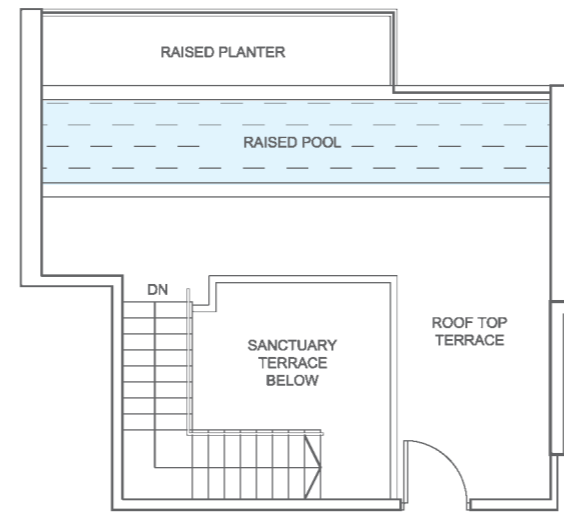
TYPE PHb7

Unit #07-07
Area 106 sqm / 1141 sqft



TYPE PHb8

Unit #07-04
Area 116 sqm / 1249 sqft

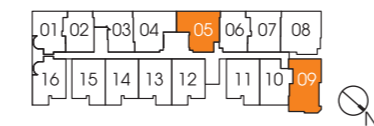
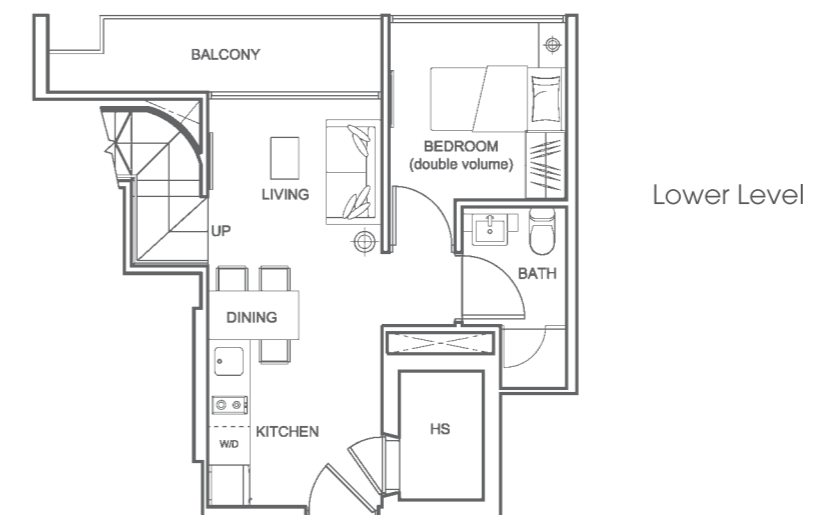
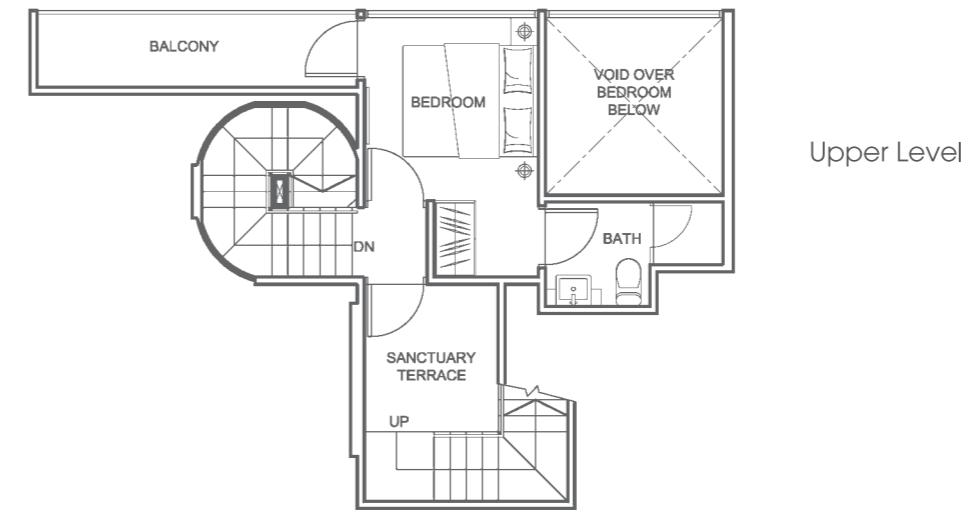
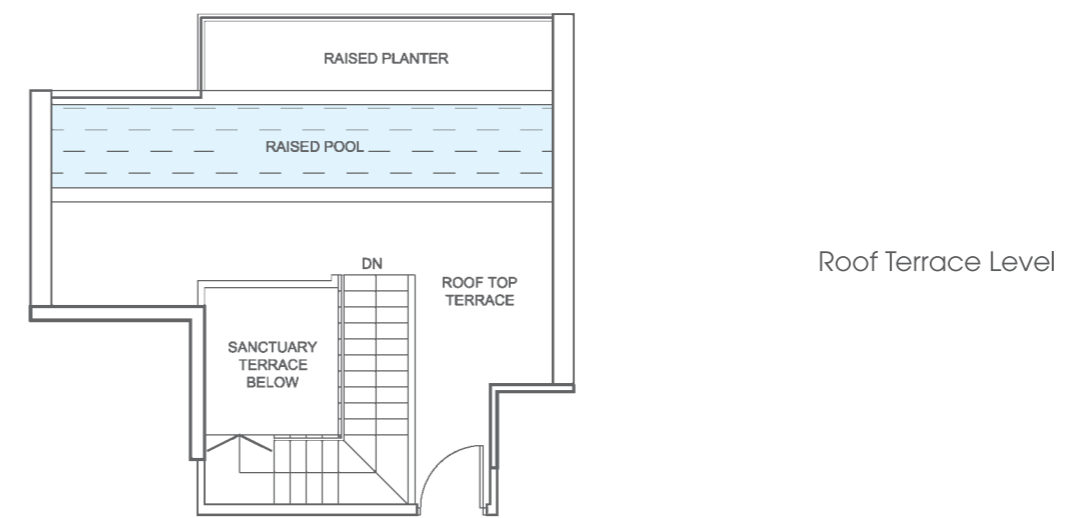


All plans are inclusive of a/c ledge, balcony and void space, where applicable. The plans are subject to change as may be required or approved by the relevant authorities. Plans are not drawn to scale and are for the purpose of a visual presentation of the different layouts that are available. Areas are estimates only and are subject to final survey.

2-BEDROOM TRIPLEX PENTHOUSE

TYPE PHb9

Unit #07-05
Area 116 sqm / 1249 sqft



All plans are inclusive of a/c ledge, balcony and void space, where applicable. The plans are subject to change as may be required or approved by the relevant authorities. Plans are not drawn to scale and are for the purpose of a visual presentation of the different layouts that are available. Areas are estimates only and are subject to final survey.

TYPE PHb10

Unit #07-09
Area 123 sqm / 1324 sqft

