



# THE MAISONS

---

*where exquisite living is encapsulated in a collection  
of two distinguished developments*

## OUR ORIGINS

### *Top Global*

Top Global is a property Group with the people and passion to develop homes that resonate with our hearts and meet the aspirations of our minds. It aims to position itself as a premier lifestyle property Group that delivers distinctive products for discerning home buyers.

The Group is helmed by Mdm Sukmawati, one of Asia's most influential business pioneers. She has four decades of expertise and experience in various business segments including agriculture, palm oil, and finance. In the real estate and property development sector, some of the more notable projects include BSD City, a city-based community that started development in the 1980s. Mdm Sukma was the driving force behind the master plan for the whole satellite city which houses residential, business and commercial properties. Other creditable developments are Plaza BII in Jakarta, Rancamaya Golf & Country Estate Project in Indonesia and The Bund Centre in Shanghai, China.

Under her leadership, the Group aspires to develop homes for a concept-driven lifestyle through a meticulous blend of architectural and landscape design, meeting the evolving expectations of homeowners.





Artist's Impression  
The Maisons

## *a classic plot, a love dialogue*

Leveraging on the natural terrain of hills and valleys in the Braddell location, The Maisons are inspired by a baronial architectural style, the masonry conveying enduring strength and resilience. The terraced levels, lavish amenities and contemporary interiors provide a balance of modernity and timeless tradition.

The scented woods, pleasure gardens and verdant avenues act as the perfect counterpoint to the classic elegance of stone, creating a landscape that is contiguous with a bygone era of romance and eminence.

A love nest for newlyweds, a home for your first child, or a space for a larger family to enjoy, The Maisons are designed to accommodate all your needs. Choose from cozy one-bedroom apartments, deluxe lofts for cosmopolitan style, or exclusive penthouses with a kitchenette on the upper floor for perfect privacy and convenience. The Group's main directive for The Maisons are livable, family-centric layouts that complement the various life stages of the homeowner.



THE MAISONS

*where exquisite living is encapsulated in a collection  
of two distinguished developments.*





**R Maison & E Maison**

0m

<b>Woodleigh MRT</b>	North East Line	approx 0.52km
<b>Serangoon MRT</b>	Circle Line North East Line Interchange	approx 0.84km
<b>Primary</b>	Maris Stella High School(Pri School) Yangzheng Pri School Cedar Pri School CHIJ Our Lady of Good Counsel First Toa Payoh Pri School Kuo Chuan Presbyterian Pri School Paya Lebar Methodist Girls' School Pei Chun Public School St Andrew's Junior School	approx 1.01km approx 0.66km approx 1.11km approx 1.74km approx 1.55km approx 1.71km approx 1.92km approx 1.66km approx 1.40km
<b>Secondary</b>	Catholic High School(Sec School) Raffles Institution Cedar Girls' Secondary School St. Andrew's Secondary School Paya Lebar Methodist Girls' School	approx 2.99km approx 2.65km approx 1.09km approx 1.35km approx 1.92km
<b>Tertiary</b>	St. Andrew's Junior College Nanyang Junior College Raffles Junior College	approx 1.34km approx 0.93km approx 3.09km
<b>International</b>	Stamford American International School Australian International School Lycée Français de Singapour	approx 0.63km approx 1.39km approx 3.10km
<b>University</b>	Singapore Management University	approx 5.53km
<b>Major Shopping Malls &amp; District</b>	Nex Junction 8 Orchard Road	approx 0.90km approx 2.41km approx 5.59km
<b>Major Business Districts</b>	CBD Future Paya Lebar iPark Future Seletar Aerospace Park	approx 6.90km approx 2.36km approx 7.46km
<b>Popular Eateries</b>	Chomp Chomp Food Centre/ Serangoon Gardens	approx 2.35km
<b>Healthcare</b>	Tan Tock Seng Hospital Mount Alvernia Hospital	approx 3.52km approx 3.51km
<b>Parks &amp; Gardens</b>	MacRitchie Reservoir Park Bishan – Ang Mo Kio Park	approx 4.04km approx 3.09km
<b>Upcoming Major Development</b>	Future Bidadari Township project which will bring about excellent supporting amenities	



*city-fringe living*

The Maisons are perfectly situated to straddle home, work and the pleasures of leisure and entertainment. Nestled in the heart of the island, your proximity to tranquil nature is equal only to the excitement of city living that is mere minutes away. Embrace the opportunity to have it all within reach.

Global Star Development Pte. Ltd. makes the material on this page available on the understanding that users exercise their discretion with respect to its use. Before relying on the material in any important matter, users should carefully evaluate the accuracy, completeness and relevance of the information.





Artist's Impression  
R Maison

## *a love story, retold*

She gazes out into the twilight, cocooned by the contentment of a comfortable home. Careful attention to the details are her delight, as she flits between her private home, secluded gardens and community living. Tactile pleasures charm, with the functionality of the living spaces meeting the finest of forms.



R MAISON





Artist's Impression  
E Maison

*exquisite charms, unfold*

He rises with the dawn, the gentle rays suffusing the landscape with their light and warmth. The master of his domain, he is at the pinnacle of his success, reflected by the tasteful quality of his home. A masculine symmetry, a balance of craft and composition.



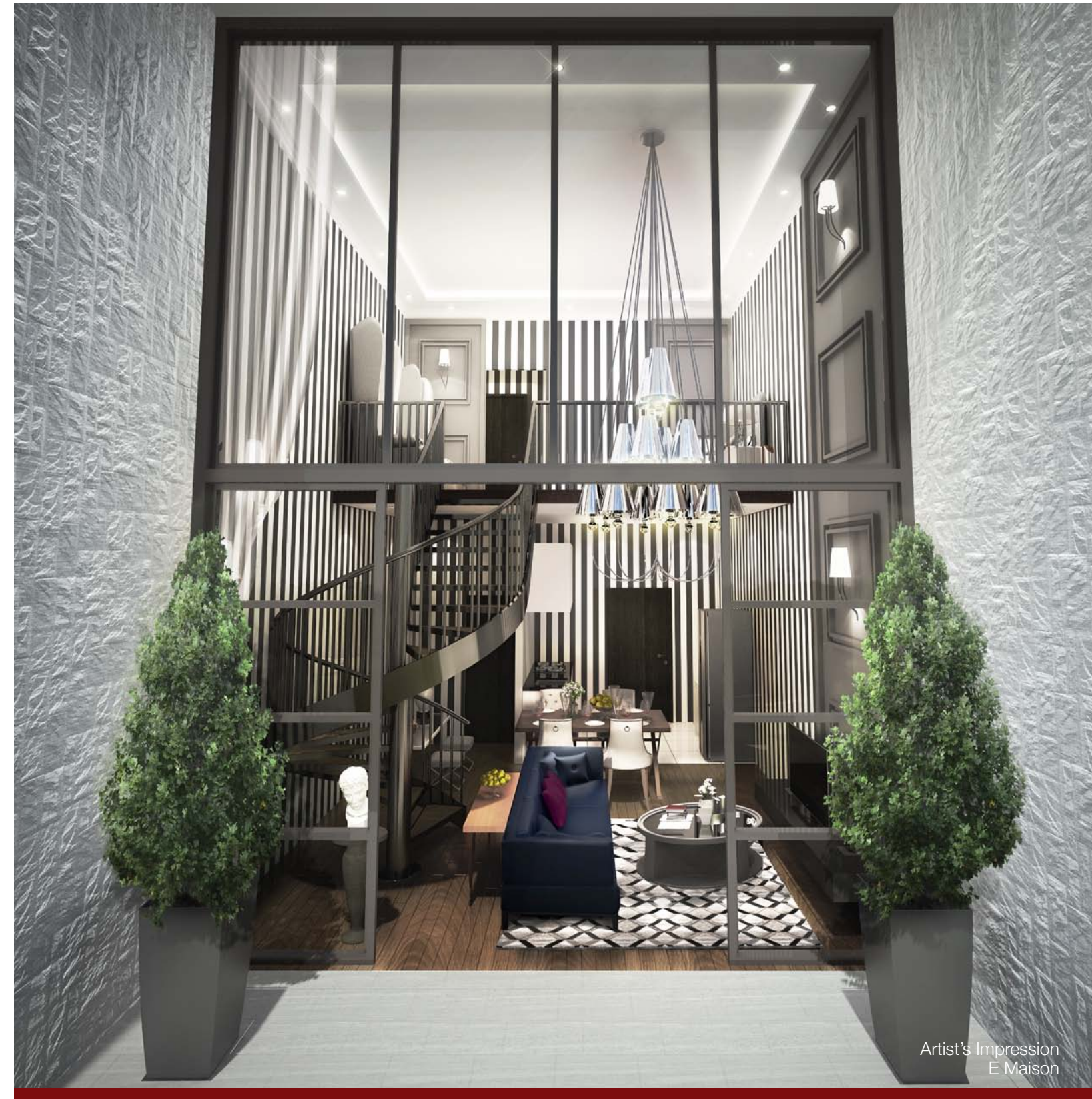
E MAISON





## *loft at R maison*

For the privileged few, the lofts at The Maisons are the ultimate in cosmopolitan living. With a private porch, feature walls and an unparalleled view with maximum privacy, one of the loft apartments will be the jewel in your crown of success.



## *loft at E maison*



## *a glimpse inside*

Let the sights, smells and gentle susurrations of the breeze bring out the romantic in you as you enjoy outdoor facilities like the rooftop swimming pool, jacuzzi and the chic clubhouse.

Well-planned living spaces with quality fixtures make ideal homes; all you need are a few tasteful furnishings & elegant touches to make your home exceptional.





Artist's Impression  
R Maison

*with exquisite finesse*

Salute the sun and soak in its energy, by carving out time to bask by the dappled waters of the pool, or strike a pose on the sun deck.



## CLOISTER POOL



Artist's Impression  
E Maison

*for serenity beckons*

Soak in the pre-dawn hours, the glistening dew resting on waking petals, as you greet the rippling glow of the gentle sun; the perfect time to live the dreams that are now within reach.



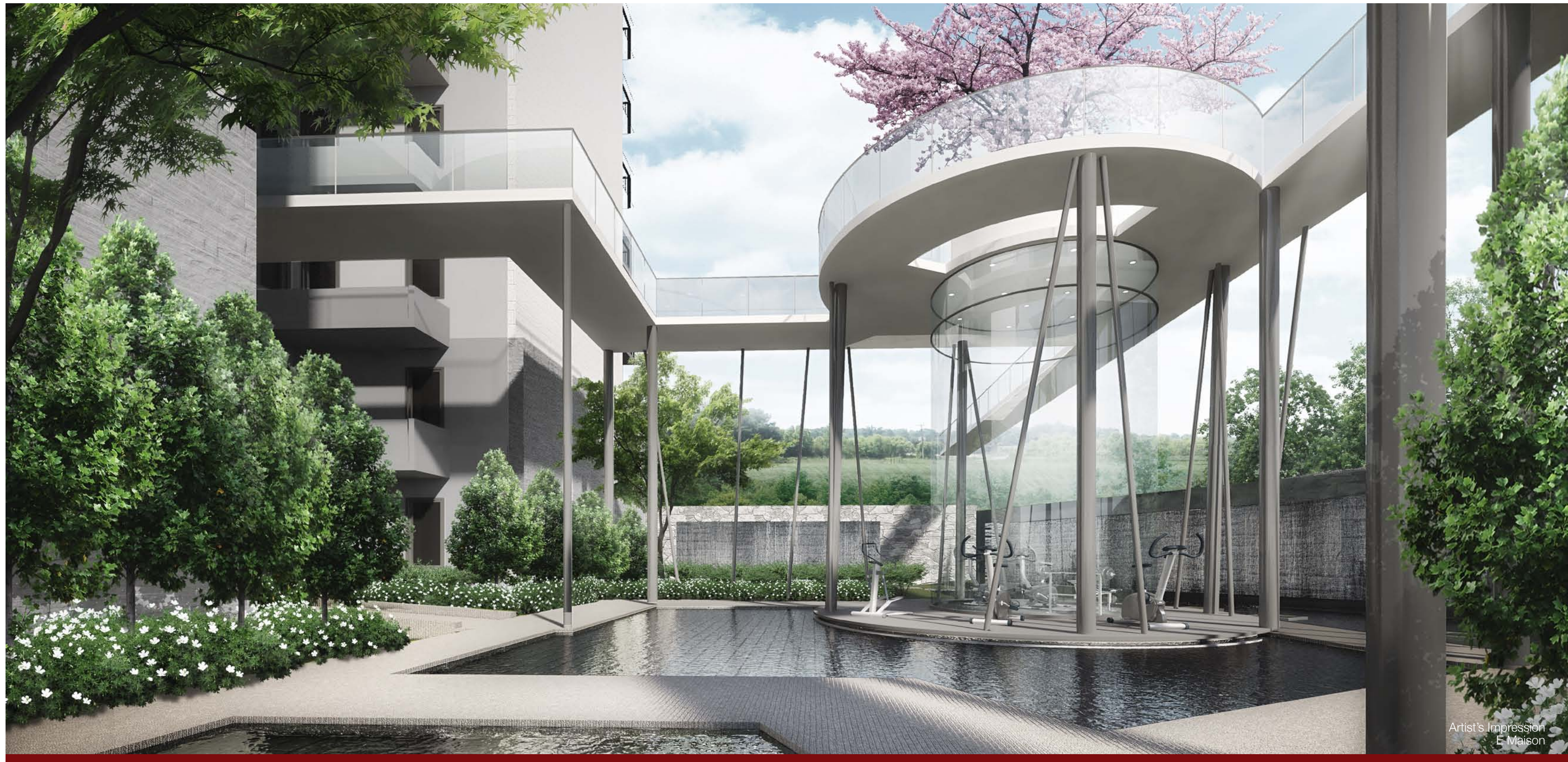


Artist's Impression  
E Maison

*where great minds gather*

Quiet pools, sculptural trees and glass walls that mirror the shimmering lights of the city - the perfect backdrop for elegant soirees and convivial celebrations.





Artist's Impression  
E Maison

### *a therapeutic respite*

Lose yourself in reverie beside the soothing, reflective waters as they remove the weariness of body and soul and recharge your senses.





Artist's Impression  
E Maison

*an enchanted exclusivity*

Enjoy the interplay between the final rays of the sunset and the emerging surreal display, as they prepare for the regal arrival of the cool moonlight.





Artist's Impression  
Living Room  
E Maison

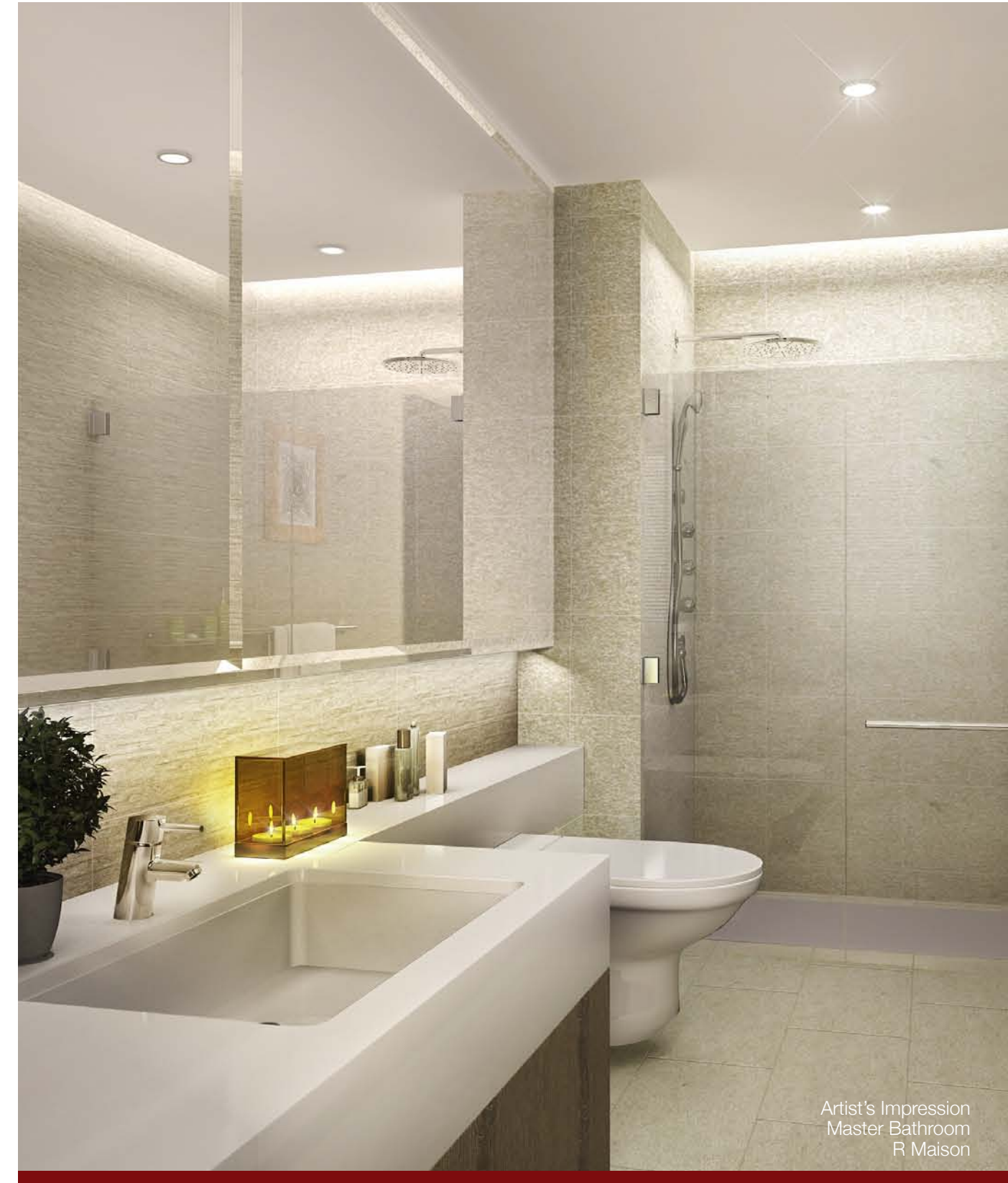
## *lavish living*

A warm space to welcome friends and family, or to curl up with a loved one and enjoy the moment. Why not have both, in a room where form meets function, and awaits your unique touch to make it exclusively yours.





Artist's Impression  
Bedroom  
E Maison



Artist's Impression  
Master Bathroom  
R Maison

## *restful and relaxing*

A private haven and a reprieve from the world at large. The enjoyment and comforts of a good home are taken up a notch, as luxury fittings and luxe furnishings make this a space that is truly your own.



Artist's Impression  
Bedroom  
R Maison



Artist's Impression  
Master Bathroom  
E Maison





Developer: Global Star Development Pte. Ltd. (Co. Reg No. 201114157E) • Name of Housing Project: R Maison • Tenure of Land: Freehold • Lot Number: 3692K PT, 6059X, 6060K PT & 6061N MK17 • Developer's Licence Number: C0977 • Expected Date of TOP: 30 June 2016 • Expected Date of Legal Completion: 30 June 2019



Developer: Global Star Development Pte. Ltd. (Co. Reg No. 201114157E) • Name of Housing Project: E Maison • Tenure of Land: Freehold • Lot Number: 6050C, 6051M, 6053V, 6054P, 7393X & 7395C MK17 • Developer's Licence Number: C0976 • Expected Date of TOP: 30 June 2016 • Expected Date of Legal Completion: 30 June 2019

While all reasonable care has been taken in the preparation of this brochure, the construction of the scale model and the Sales Gallery (collectively "the Collaterals"), the developer and its agent(s) shall not be held responsible for any inaccuracies or omissions. The statements, information and depictions in the Collaterals shall not be regarded or relied upon as statements or representations of fact, and they are not intended to form any part of the contract for the sale of the housing units. Visual representations including models, drawings, illustrations, photographs, pictures, art renderings portray artistic impressions only, and are not to be taken as representations of fact. All plans and models are not to scale unless expressly stated and are subject to amendments as may be required by the developer or as may be required or approved by the relevant authorities. The brand, colour, and model of all materials, fittings, equipment, finishes, installations and appliances supplied shall be provided subject to the Developer's architect's selection, market availability and the sole discretion of the Developer. All information, contained in the Collaterals, including equipment, materials, fittings, finishes, installations and appliances description, plans and specifications are current at the time of printing, and are subject to such changes as are required by the developer or the relevant authorities. The floor areas stated in the brochure are approximate measurements and subject to final survey. The Sale and Purchase Agreement shall form the entire agreement between the developer and the purchaser and shall in no way be modified by any statements or representations (whether contained in this brochure or otherwise).



[www.themaisons.com.sg](http://www.themaisons.com.sg)